



Sala de Crise – Região Nordeste



MINISTÉRIO DE
MINAS E ENERGIA



07_DE_NOVEMBRO_DE_2023

SGB



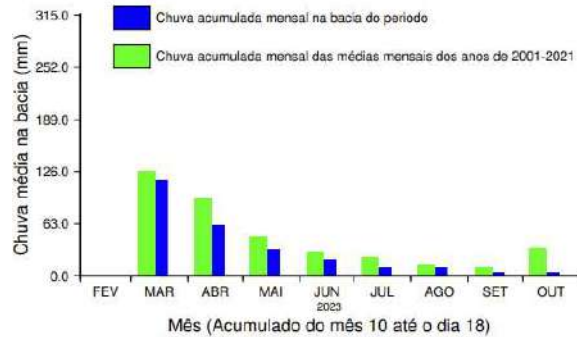
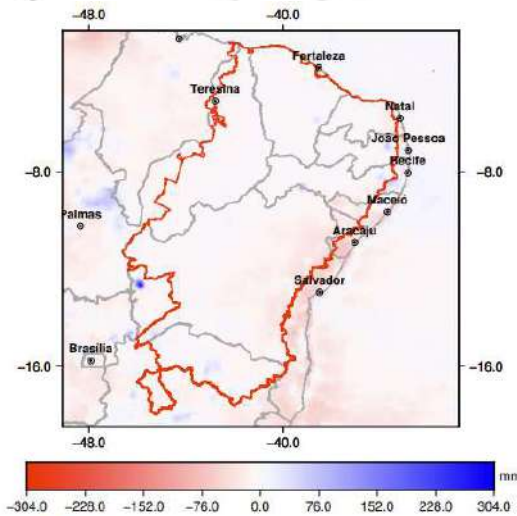
SUMÁRIO

- Anomalias de chuvas em bacias
- Níveis dos rios
- Níveis nos aquíferos

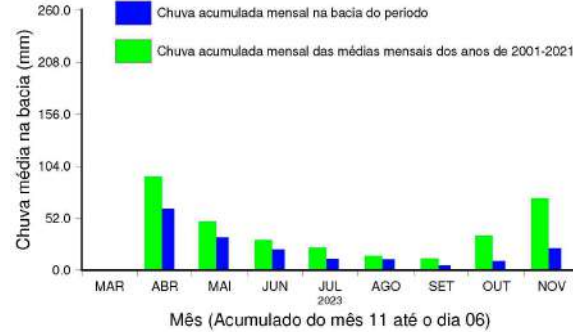
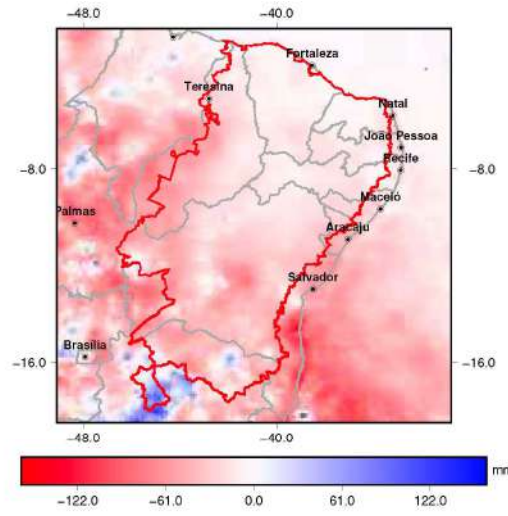


SEMIÁRIDO

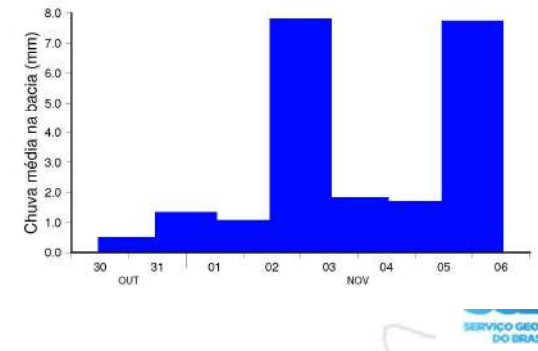
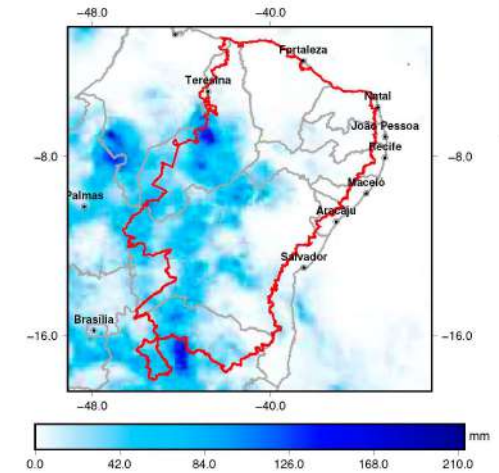
**Anomalias de Chuvas
SETEMBRO -7 mm**



**Anomalias de Chuvas
OUTUBRO -25,1 mm**



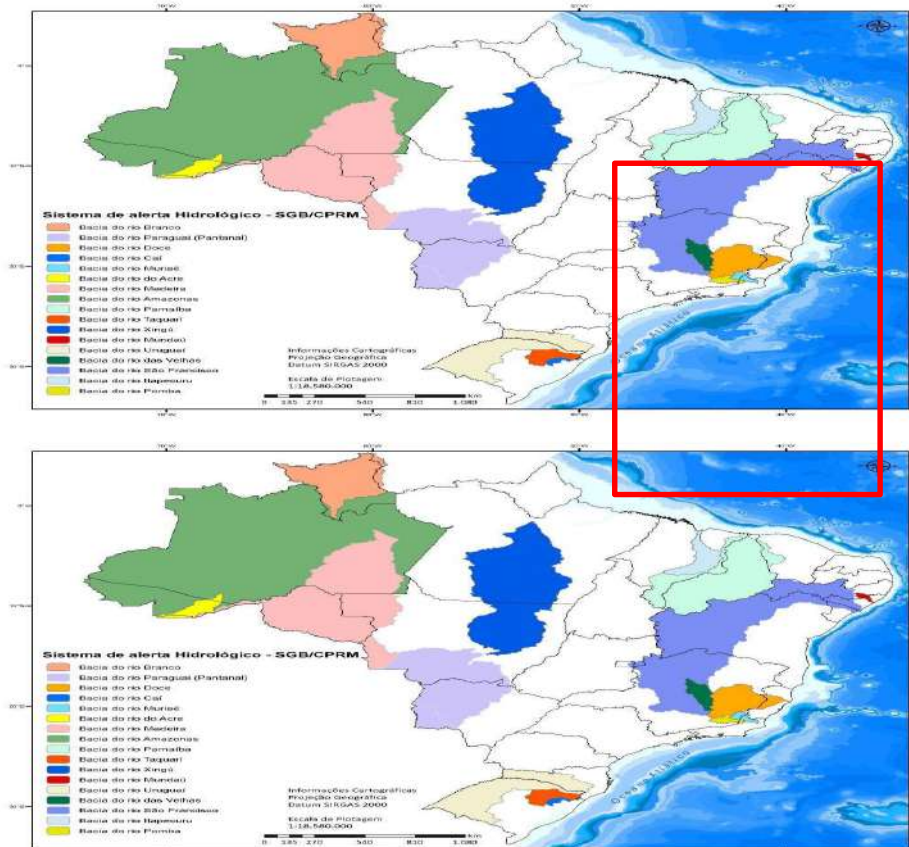
**Chuvas acumuladas
7 dias 22 mm**







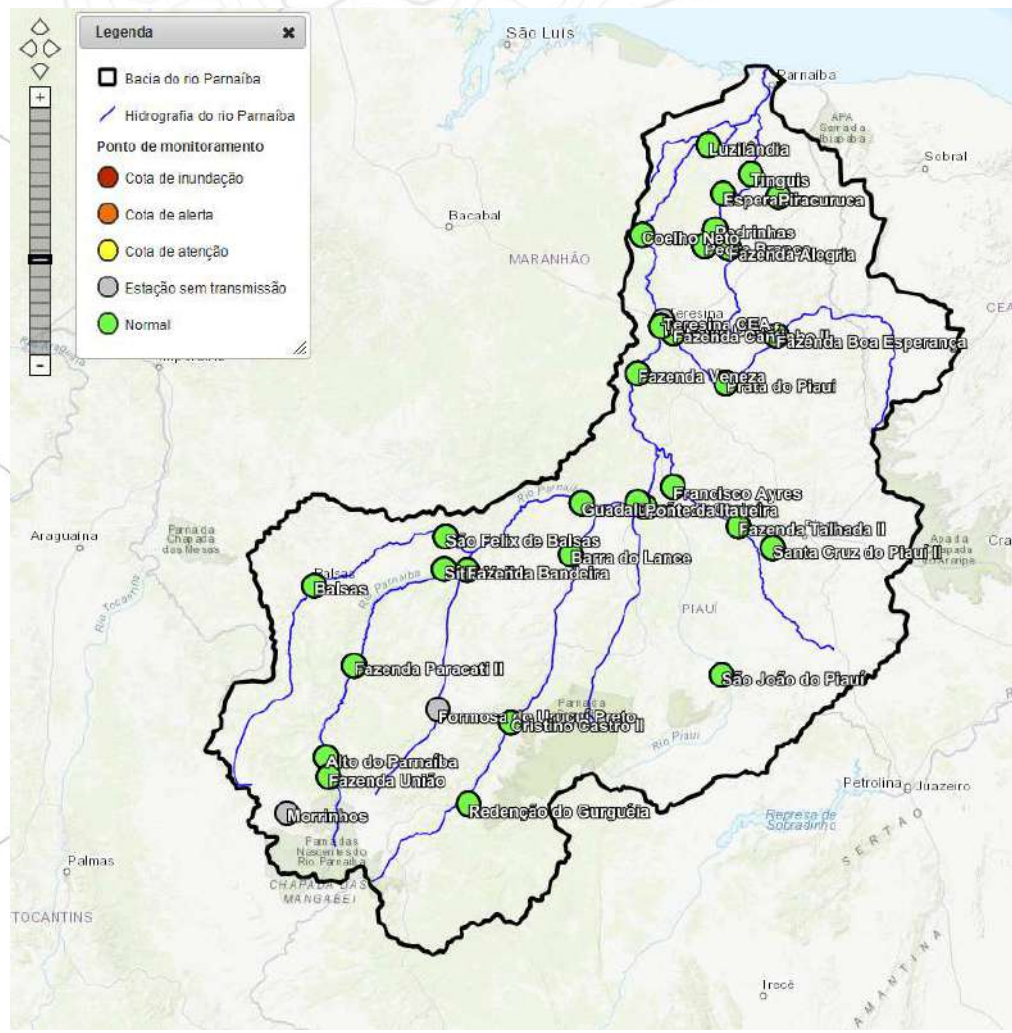
SISTEMA DE ALERTA HIDROLÓGICO



REGIÃO NORDESTE



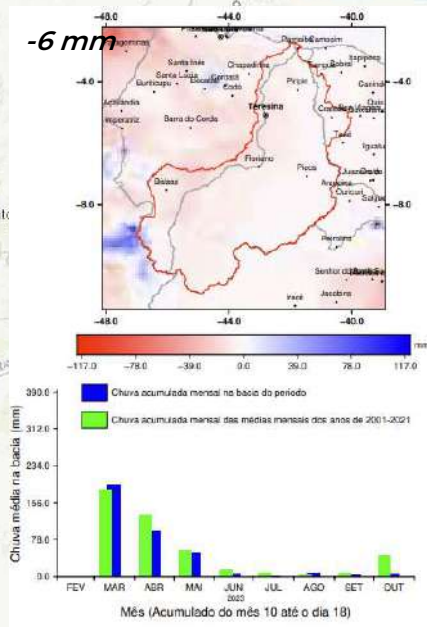
-  SAH MUNDAÚ
-  SAH ITAPECURU
-  SAH PARNAÍBA
-  SAH SÃO FRANCISCO



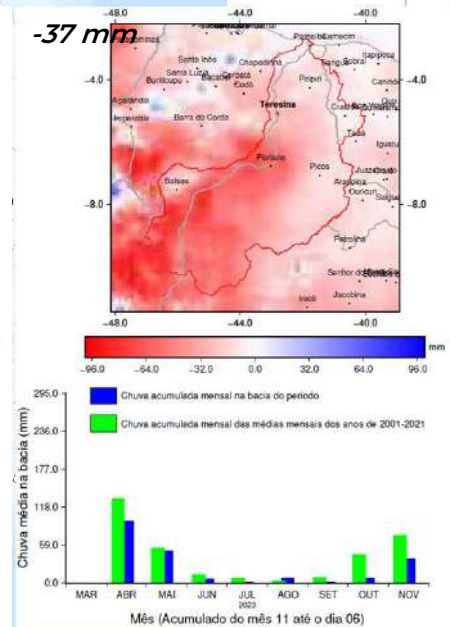
BACIA DO PARNAÍBA



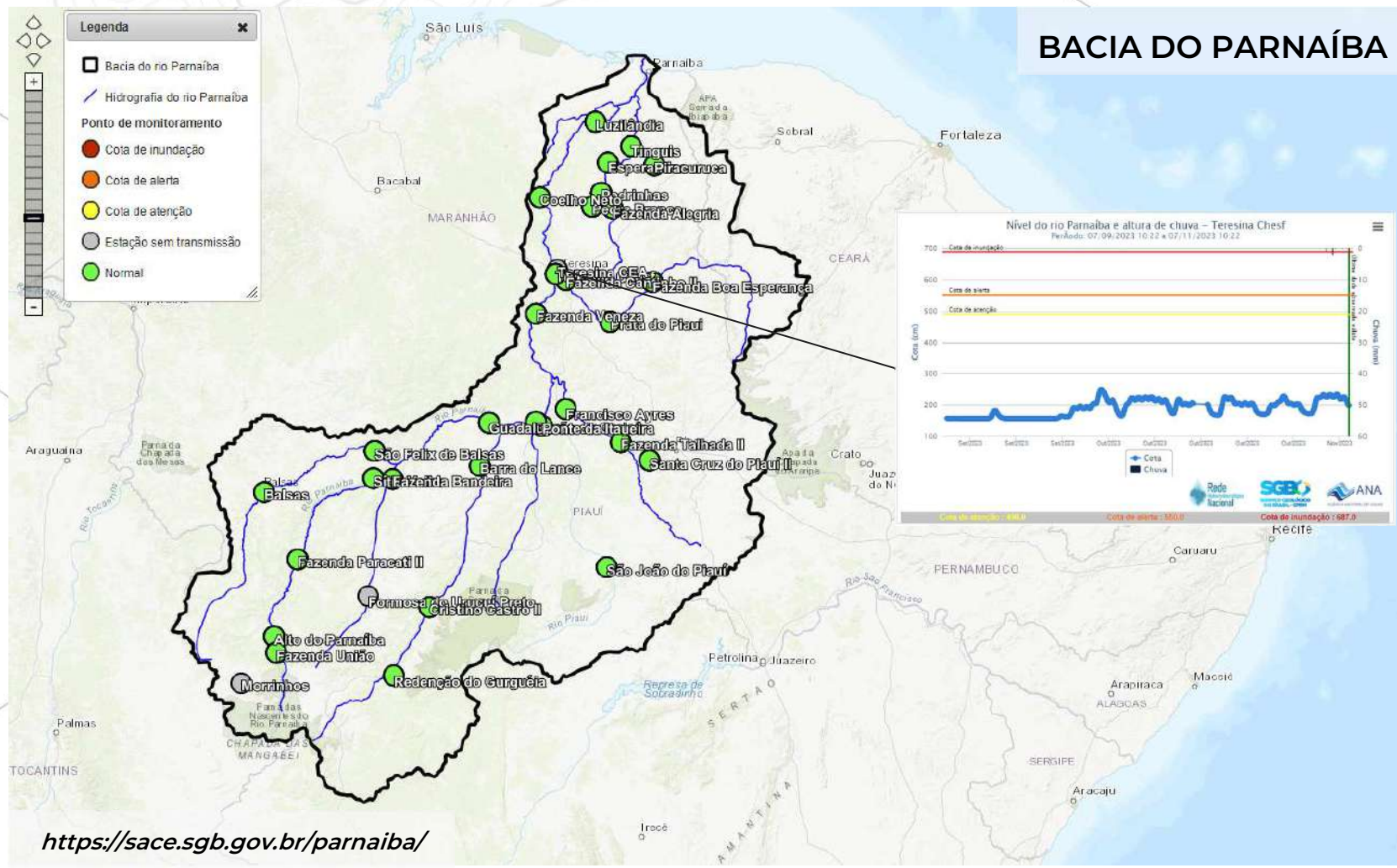
Anomalia de Chuvas SET/23

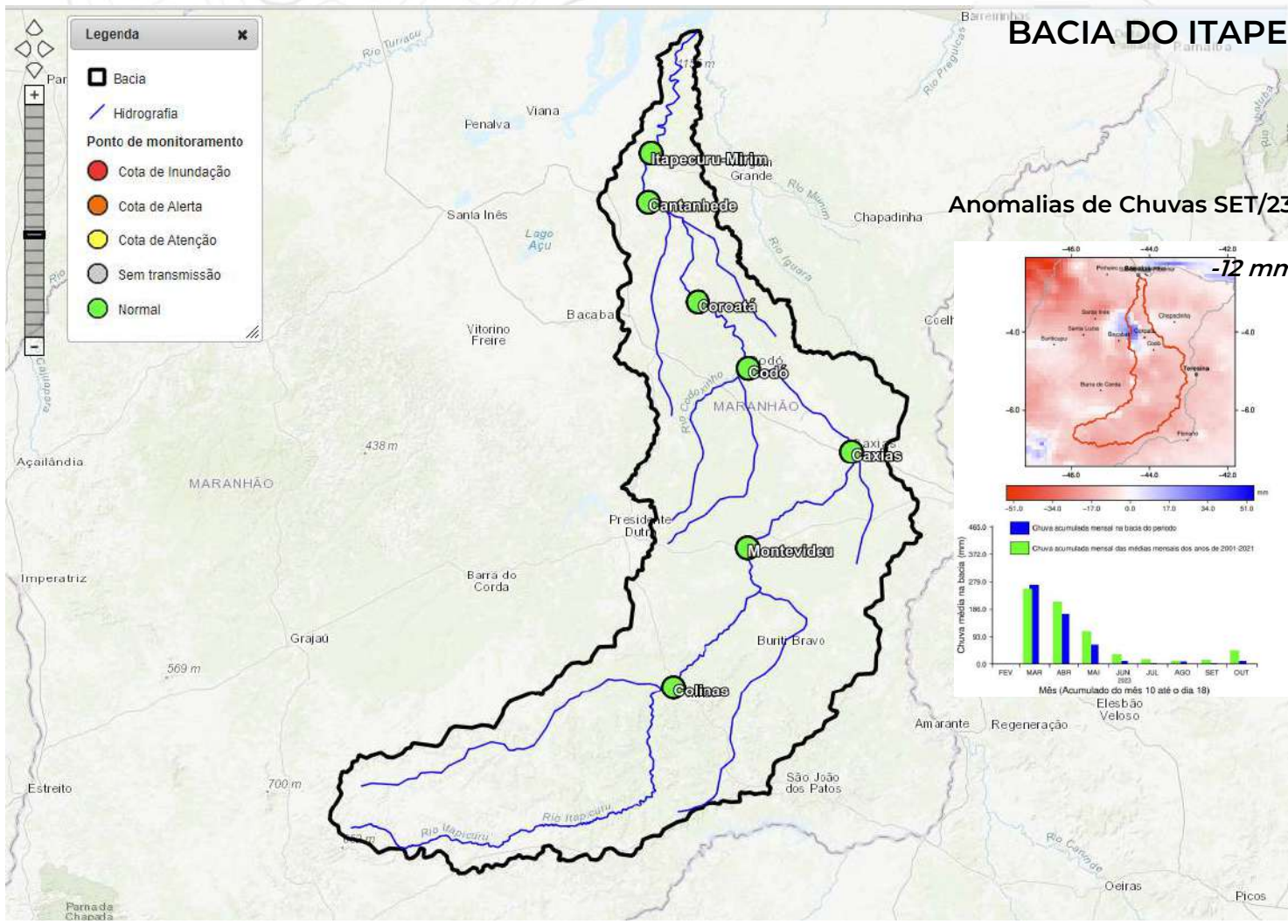


Anomalia de Chuvas OUT/23



BACIA DO PARNAÍBA



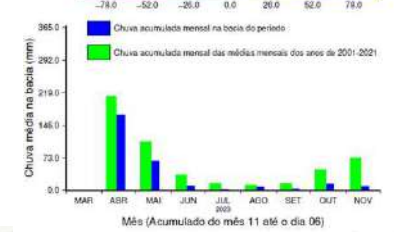
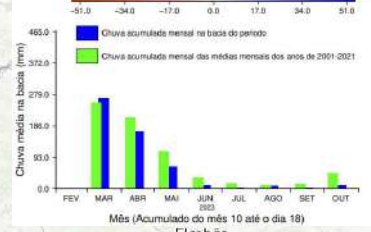
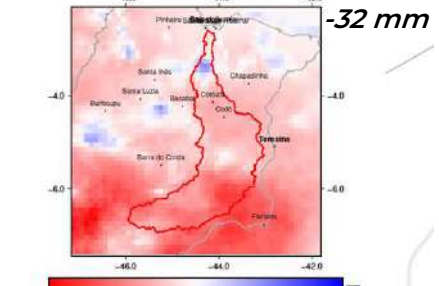
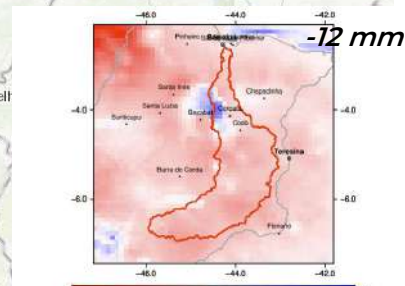


BACIA DO ITAPECURU



Anomalias de Chuvas SET/23

Anomalias de Chuvas Out/23



Legenda

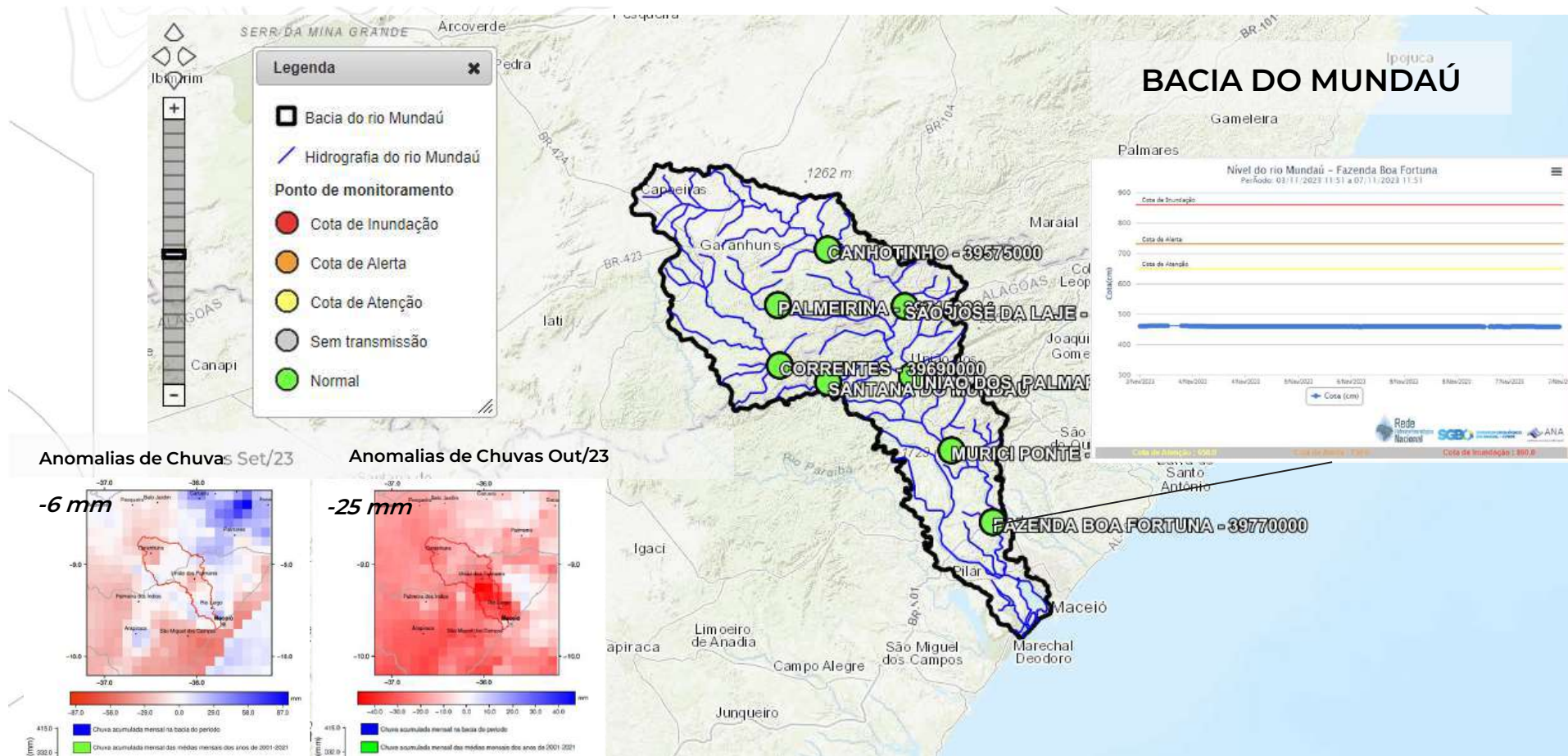
- Bacia
- Hidrografia
- Ponto de monitoramento
 - Cota de Inundação
 - Cota de Alerta
 - Cota de Atenção
 - Sem transmissão
 - Normal

BACIA DO ITAPECURU

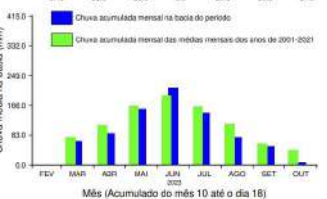
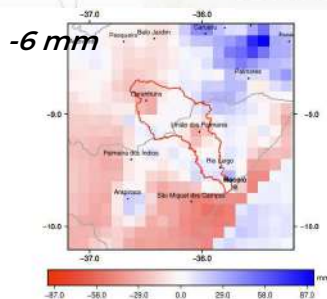


<https://sace.sgb.gov.br/itapecuru>

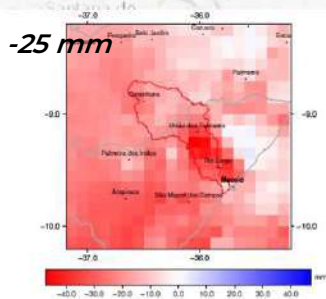


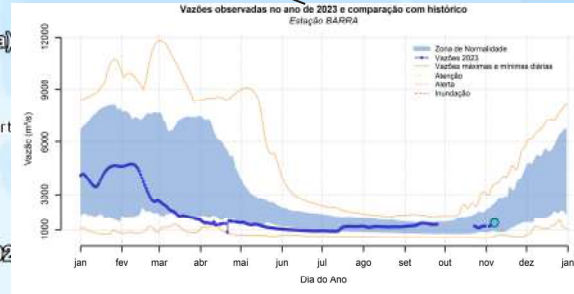
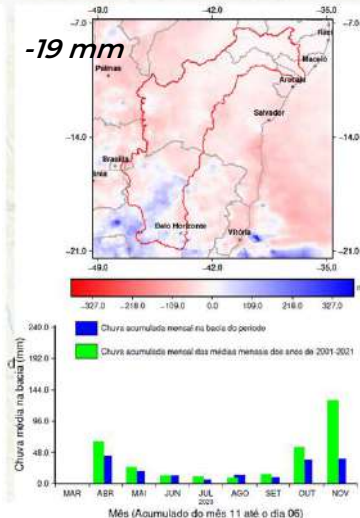
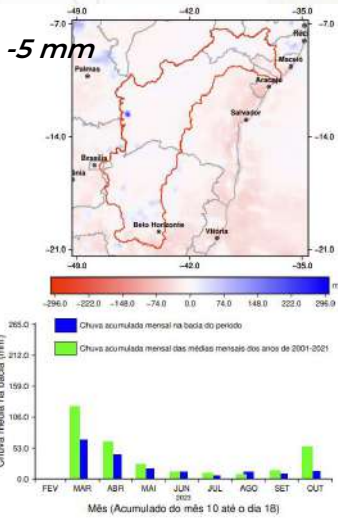
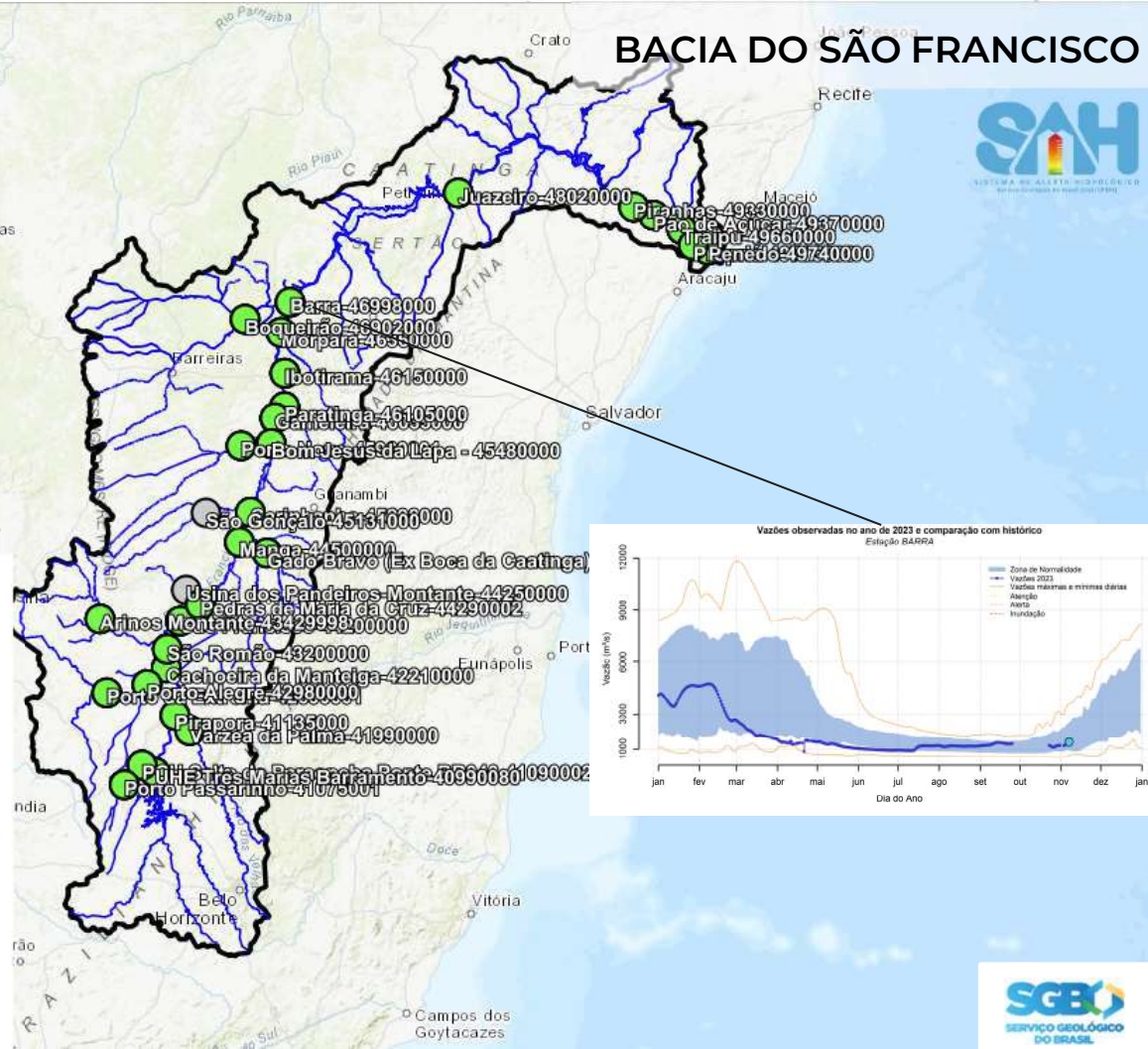
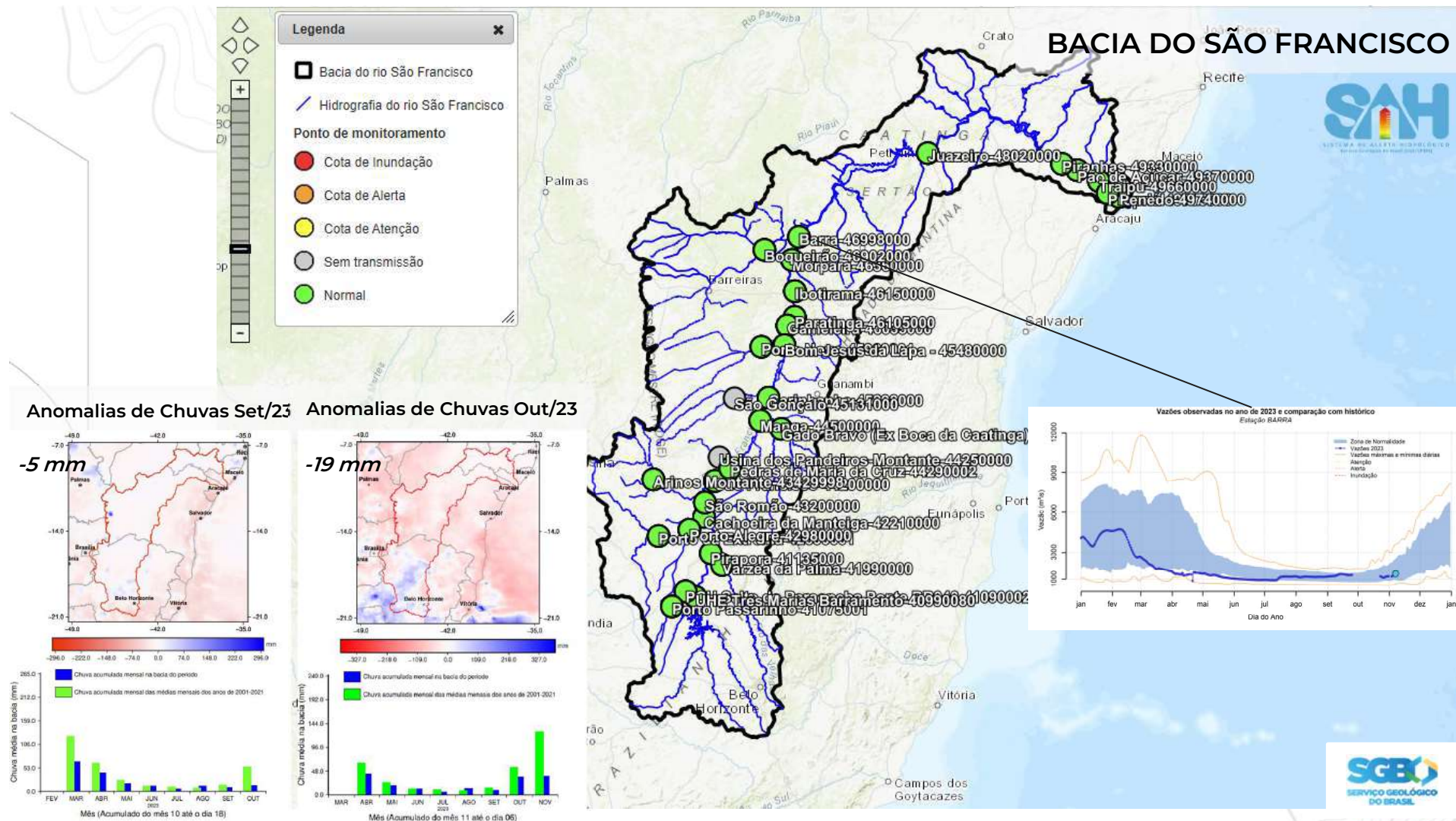


Anomalias de Chuvas Set/23

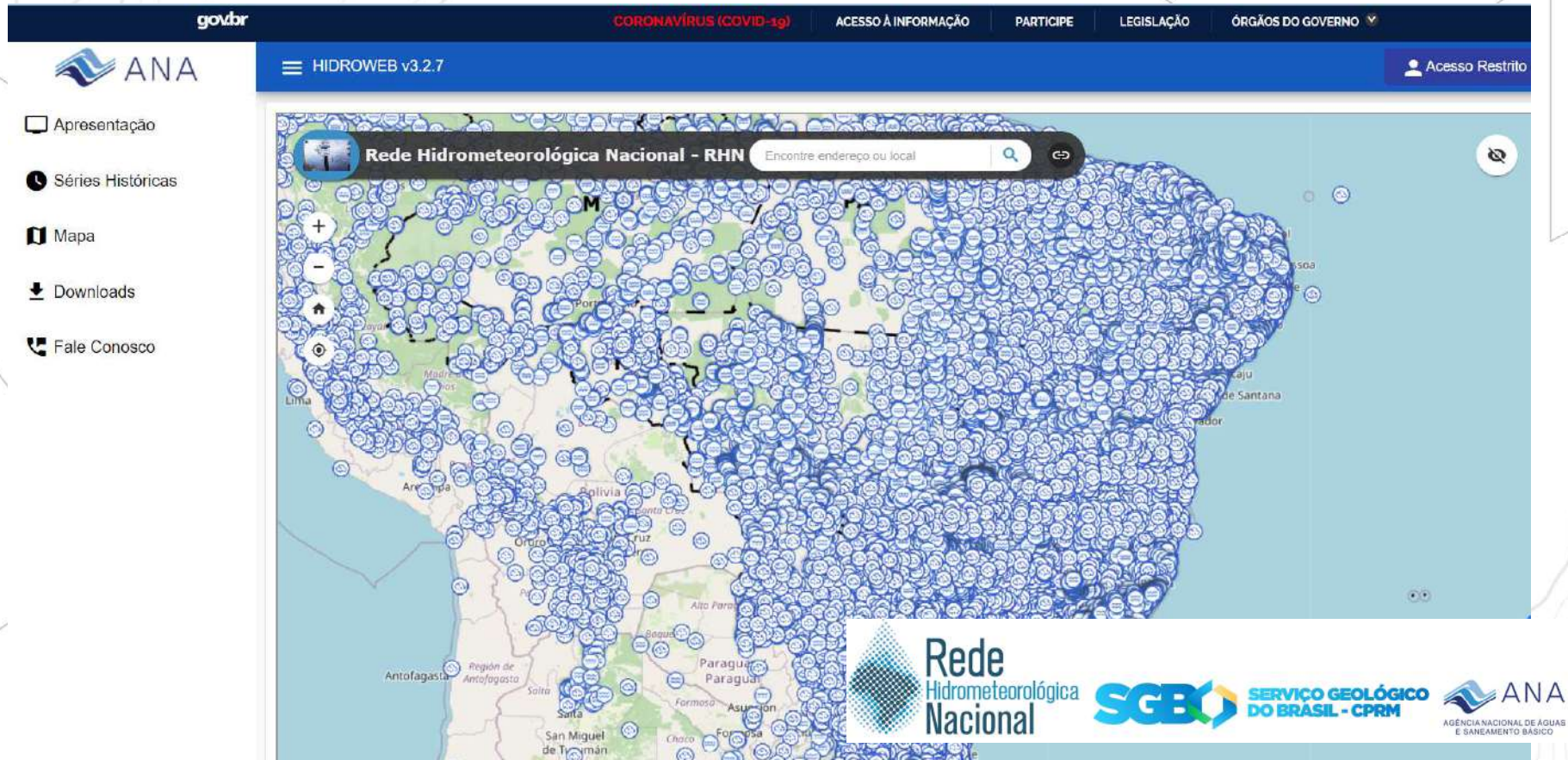


Anomalias de Chuvas Out/23





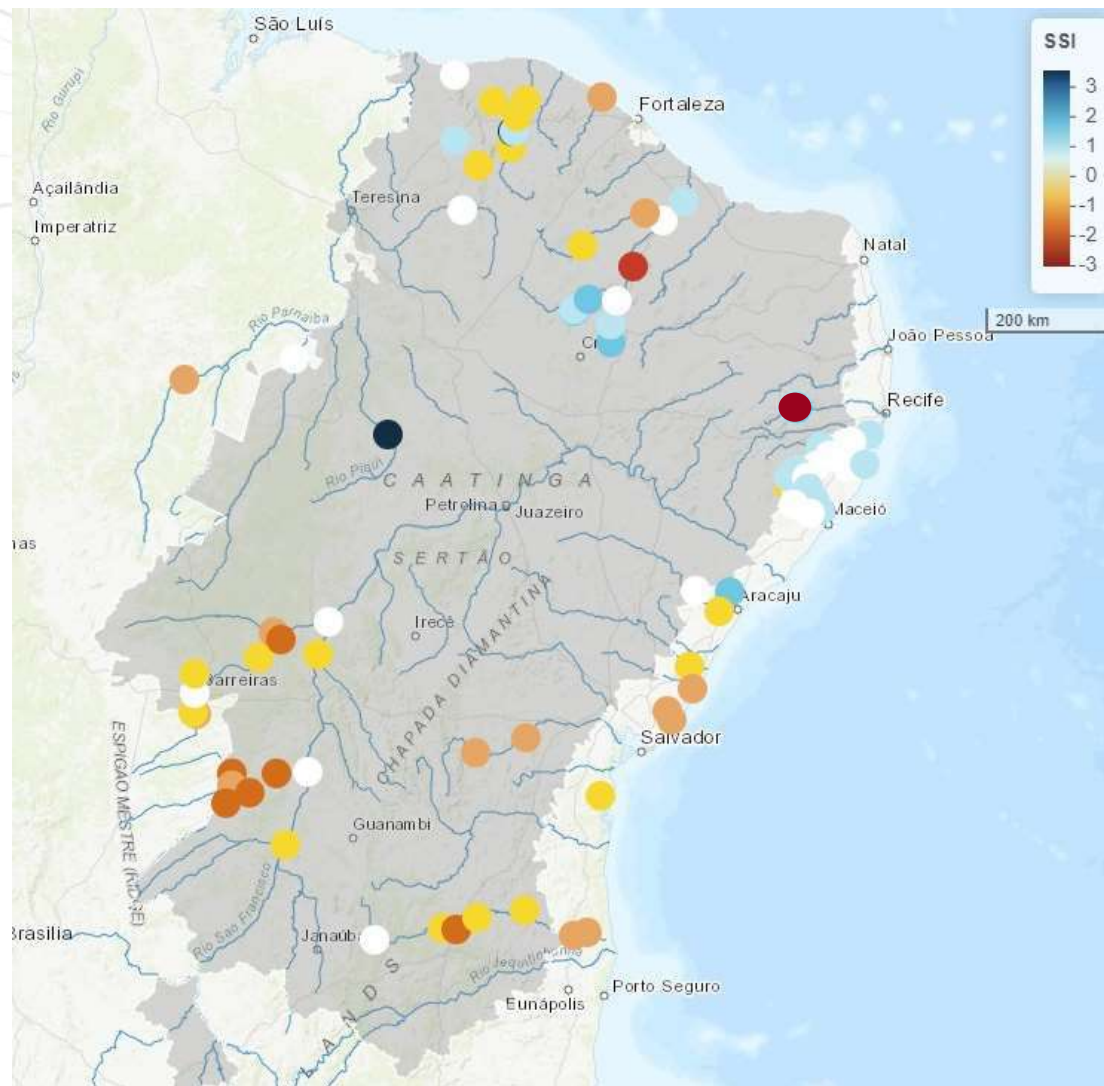
Níveis dos rios



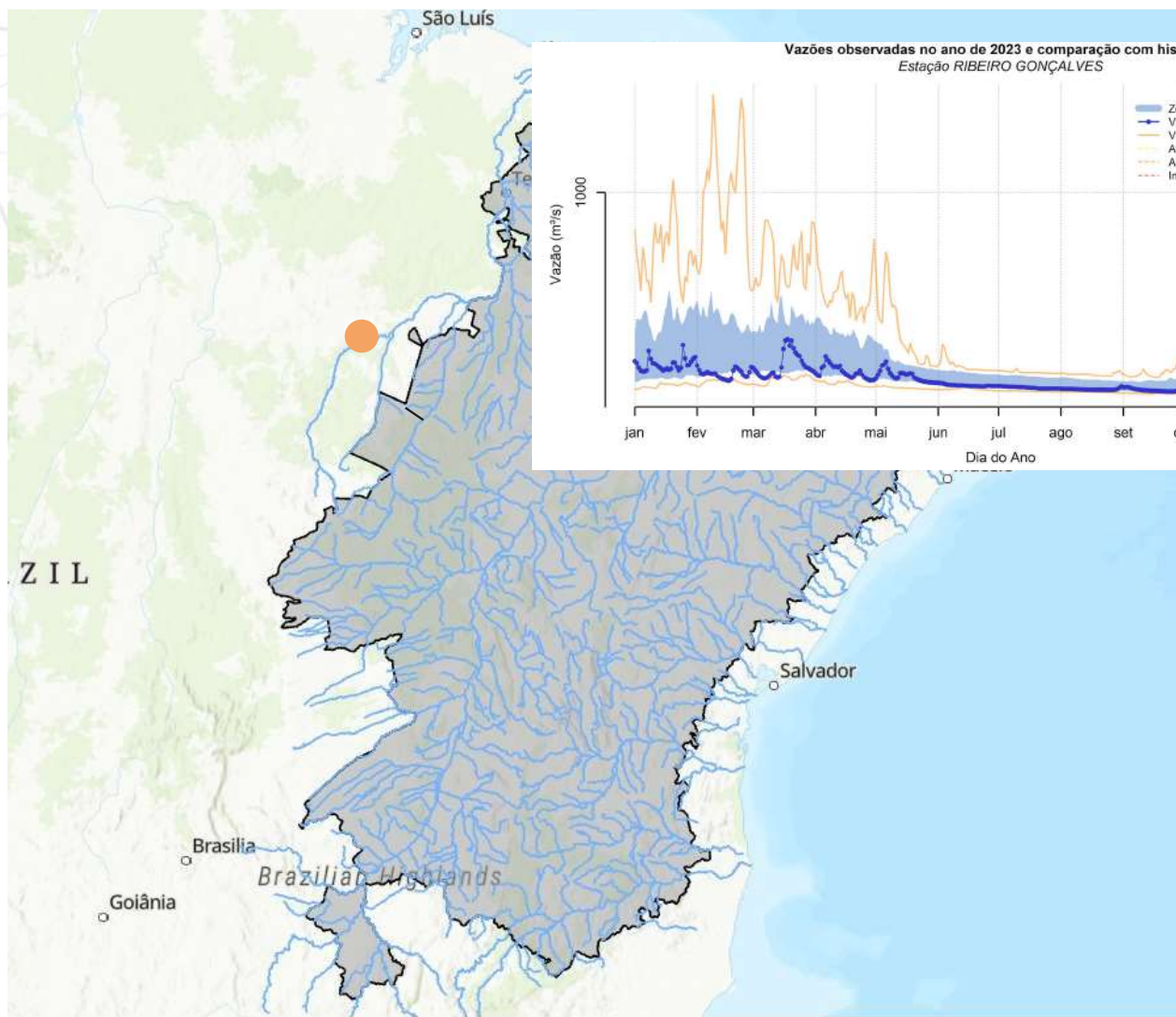
<https://app.powerbi.com/view?r=eyJrljoiODNhMzZhZjAtN2U5Mi00OTZILWI2M2EtMDIwMGE0N2QyZjBmliwidCI6ImUwYmI0MDEyLTgxMGltNDY5YS04YjRkLTY2N2ZjZDFiYWY4OCJ9>



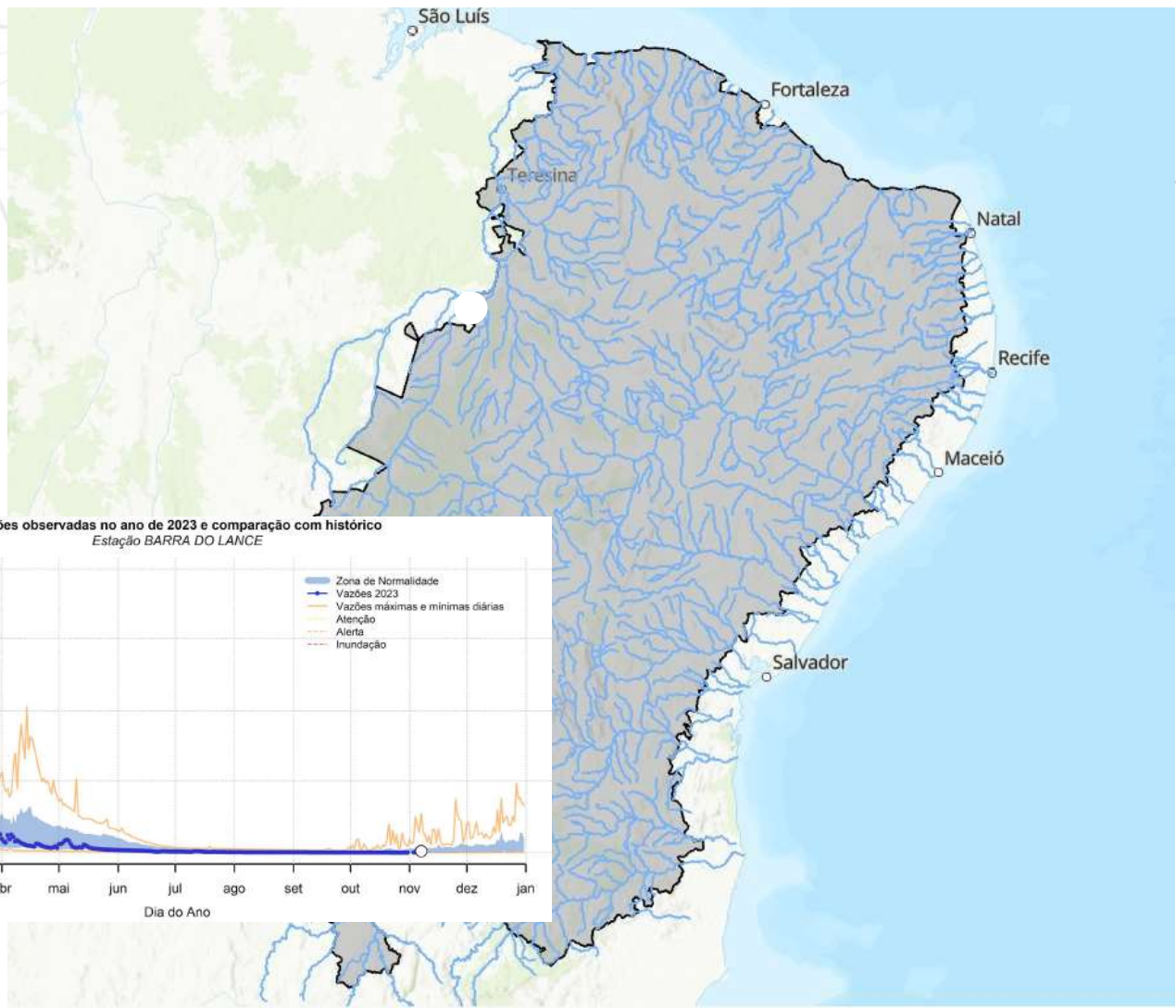
Níveis dos rios



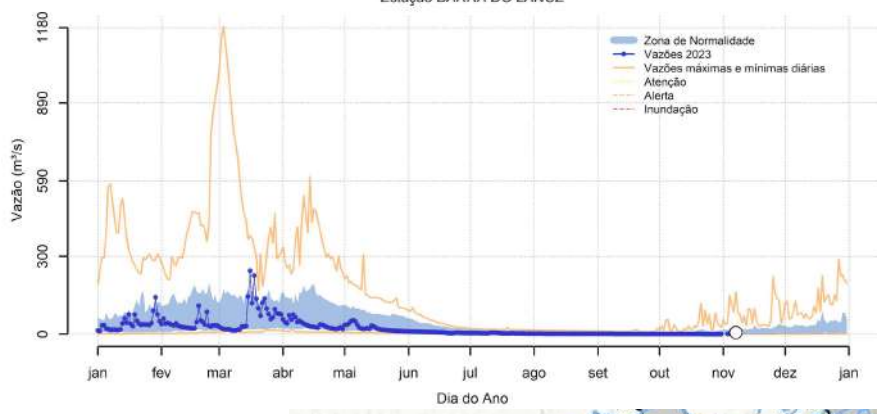
Níveis dos rios



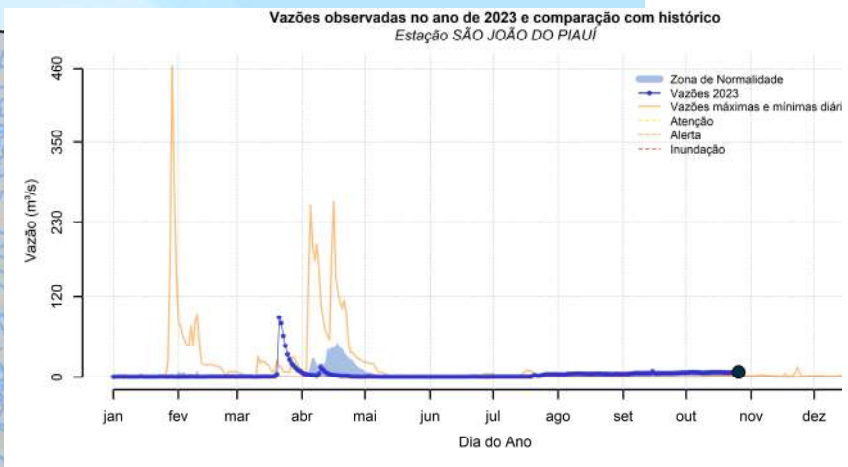
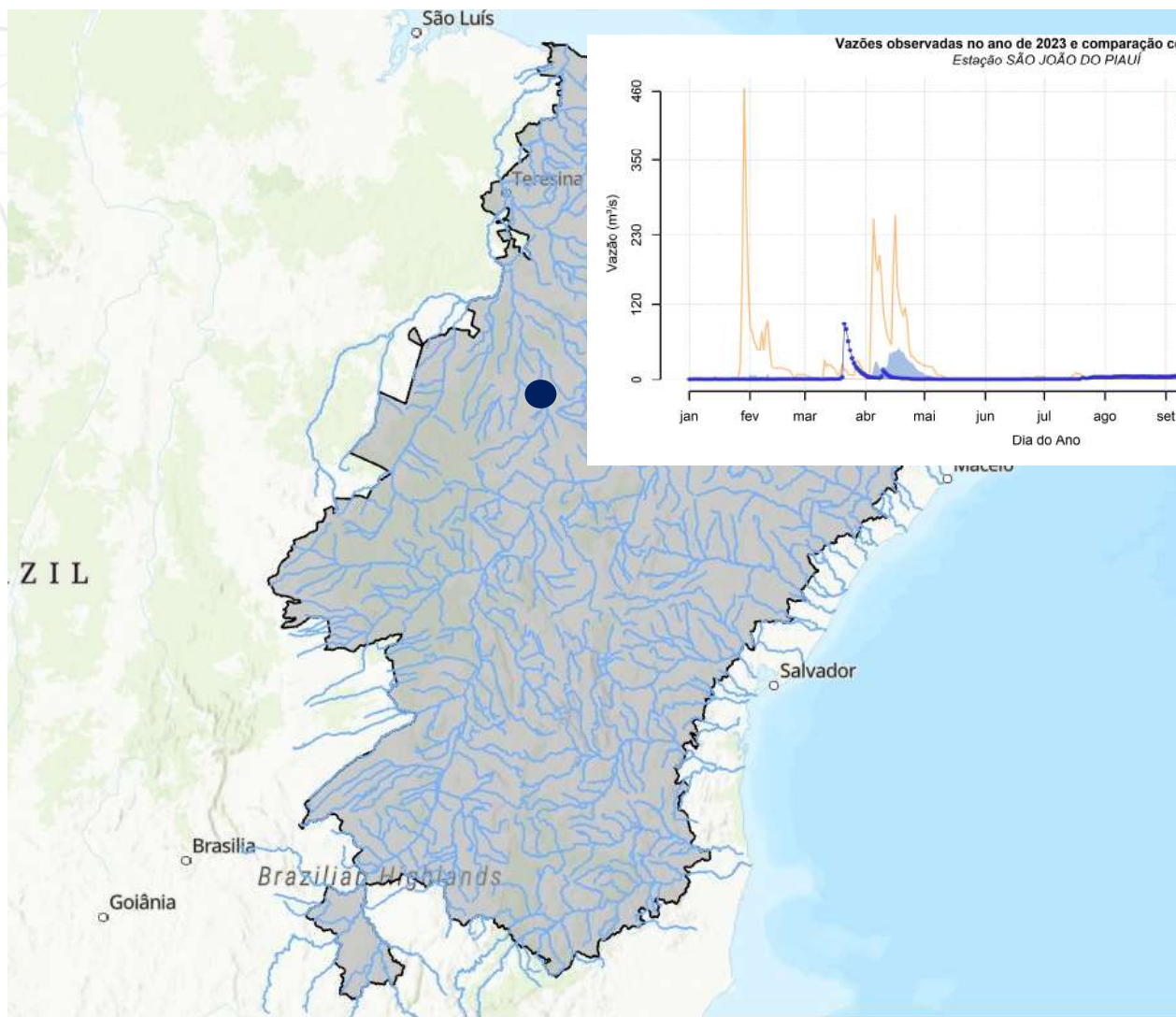
Níveis dos rios



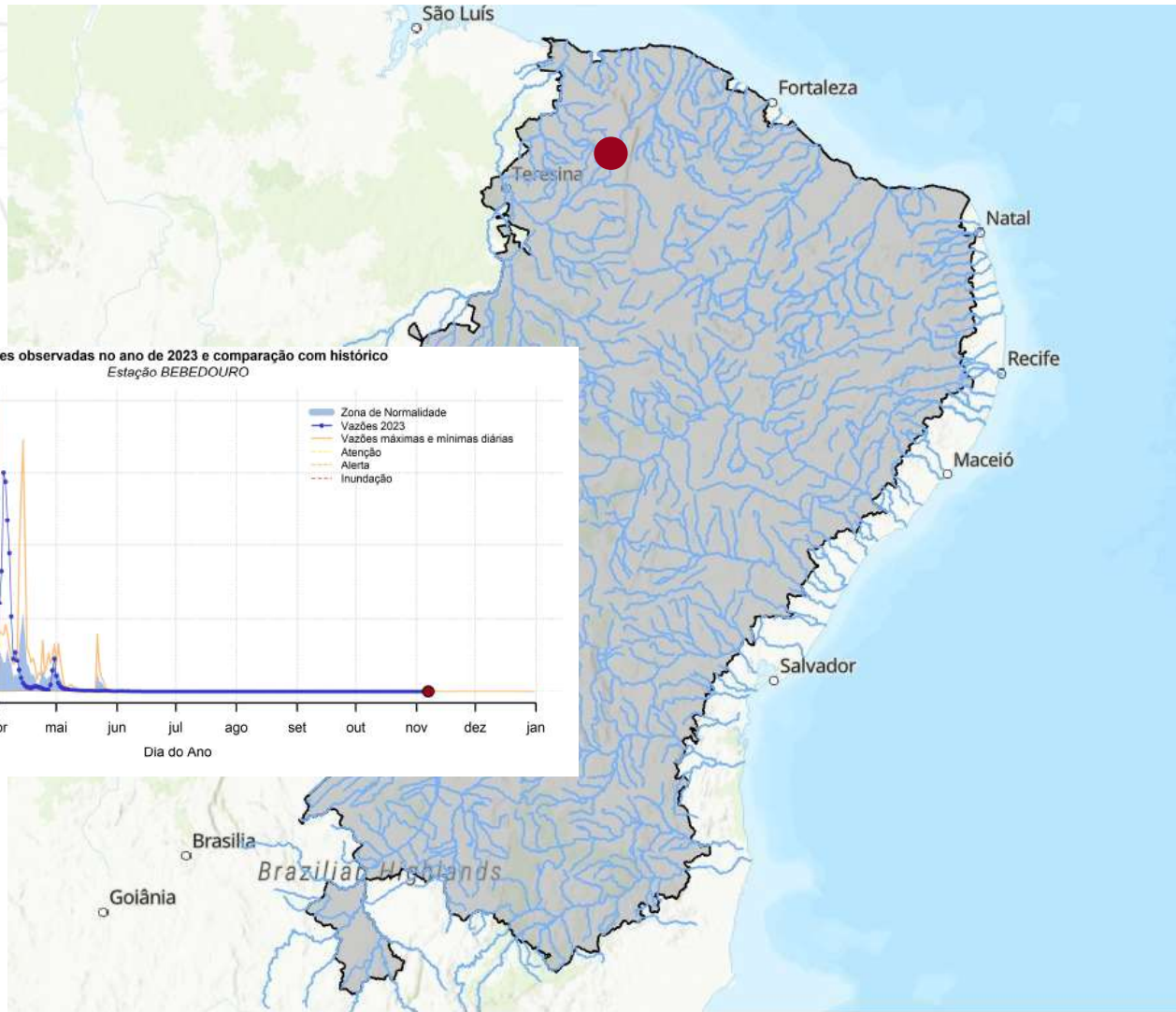
Vazões observadas no ano de 2023 e comparação com histórico
Estação BARRA DO LANCE



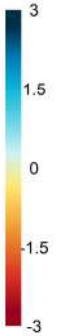
Níveis dos rios



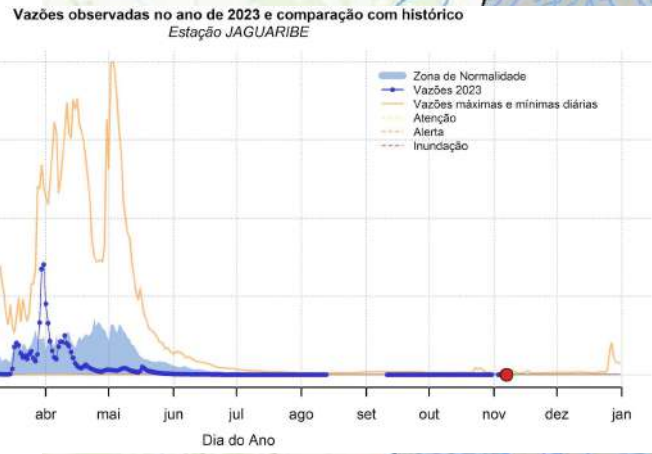
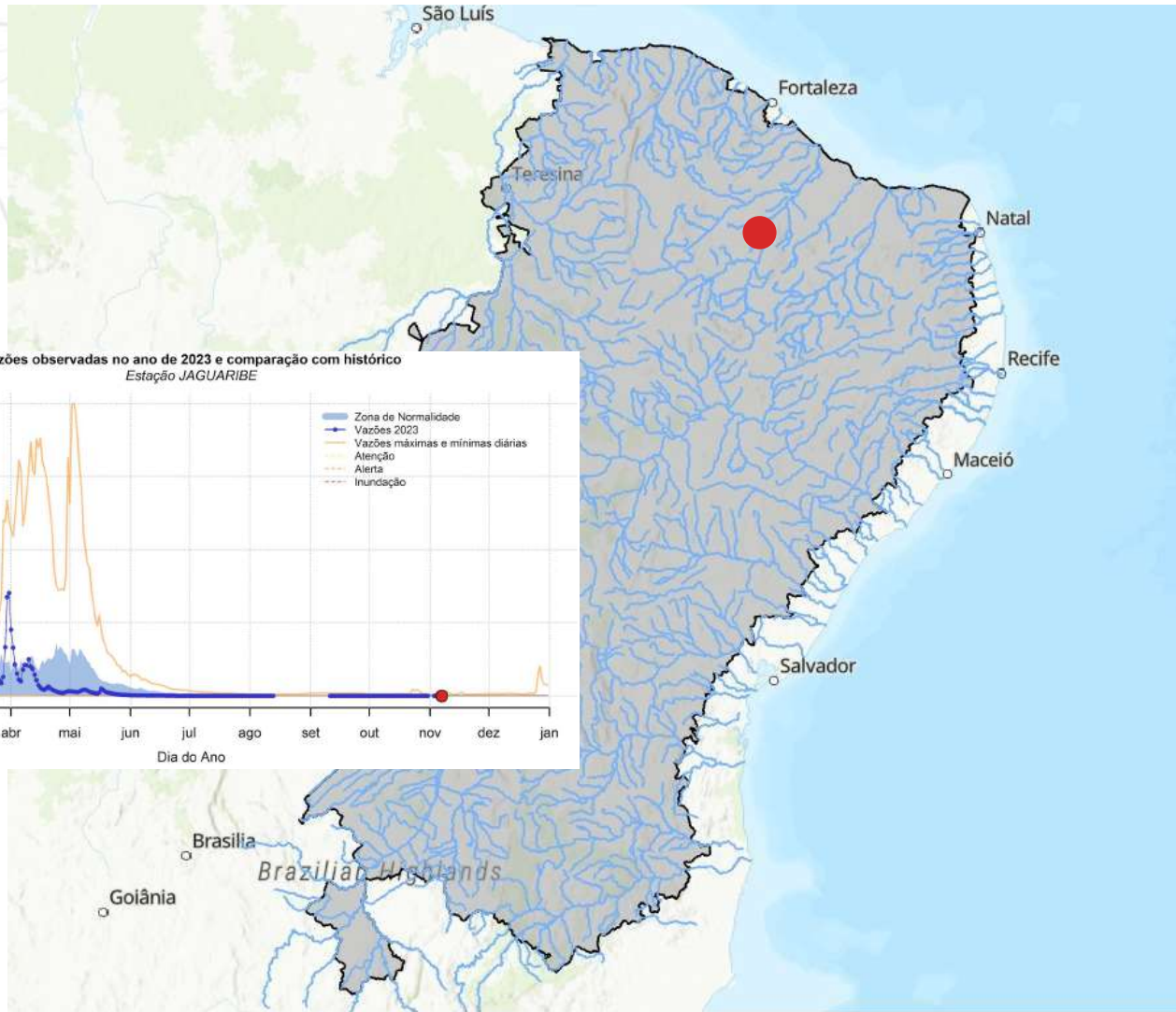
Níveis dos rios



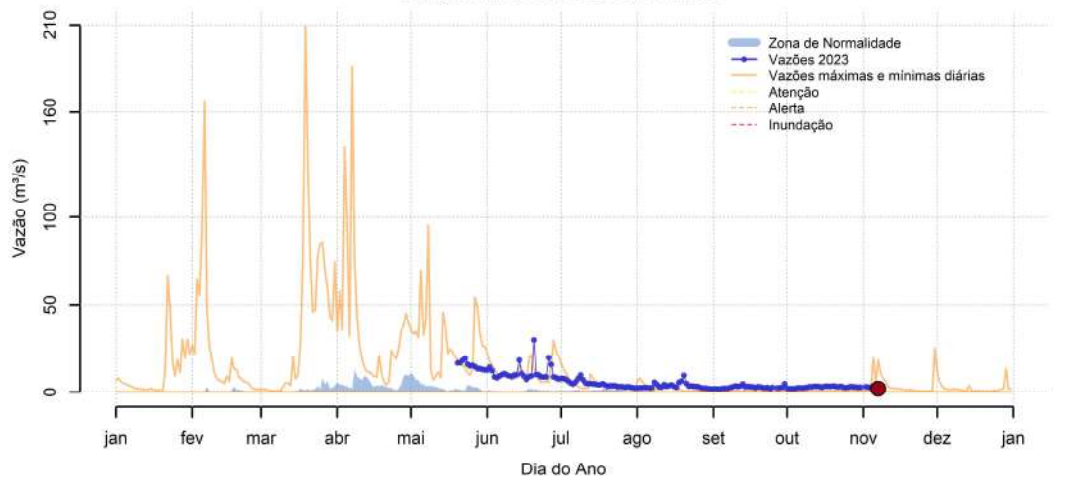
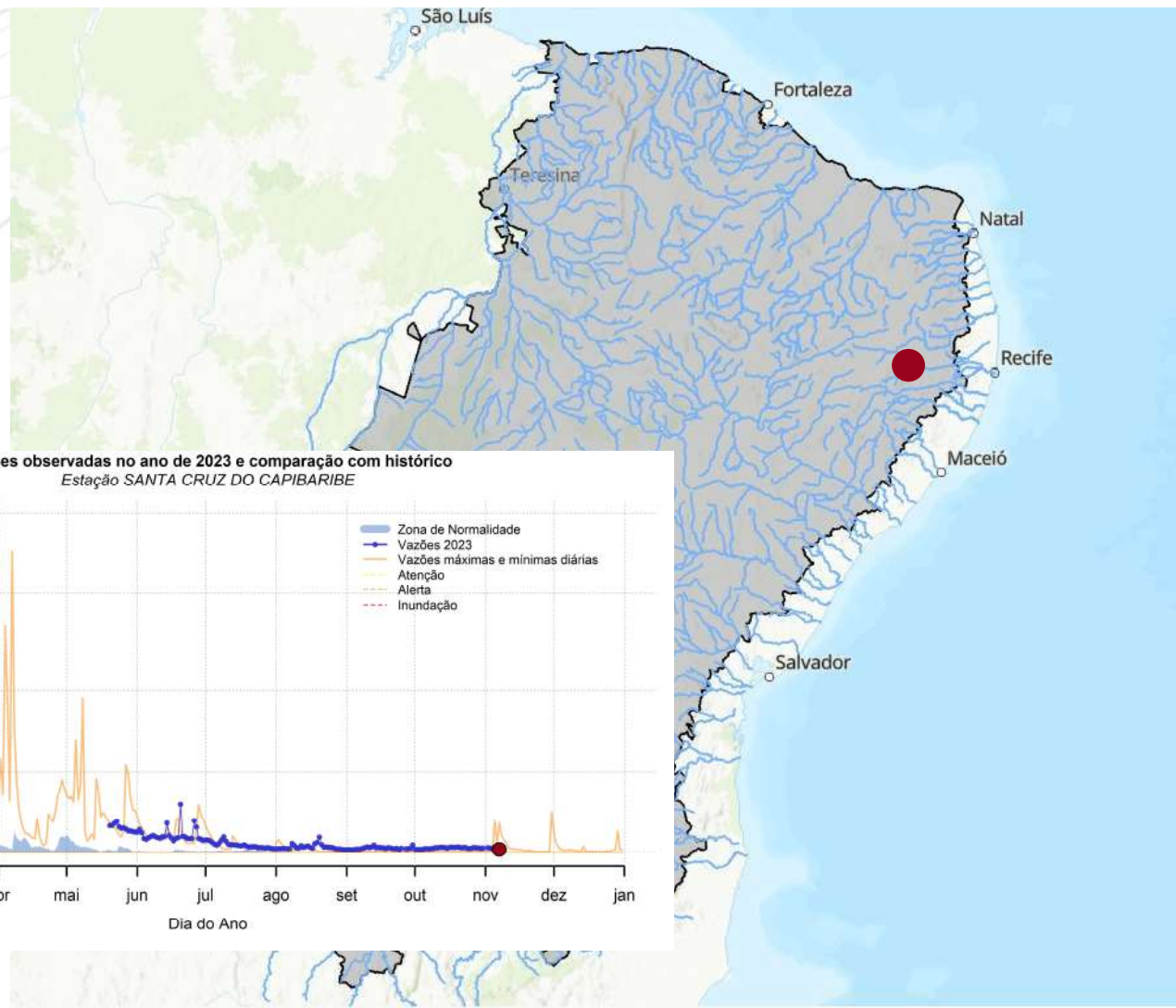
SSI



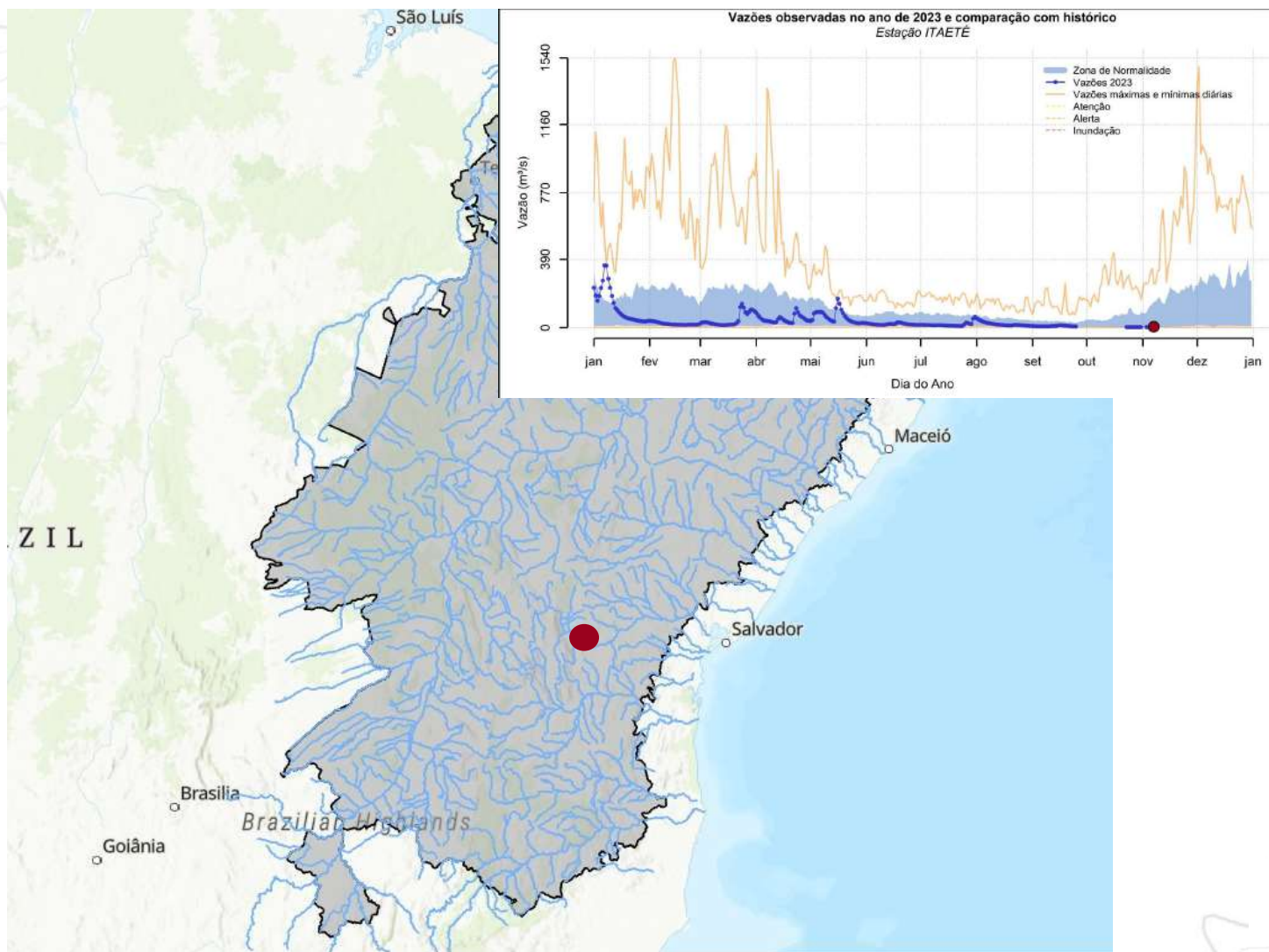
Níveis dos rios



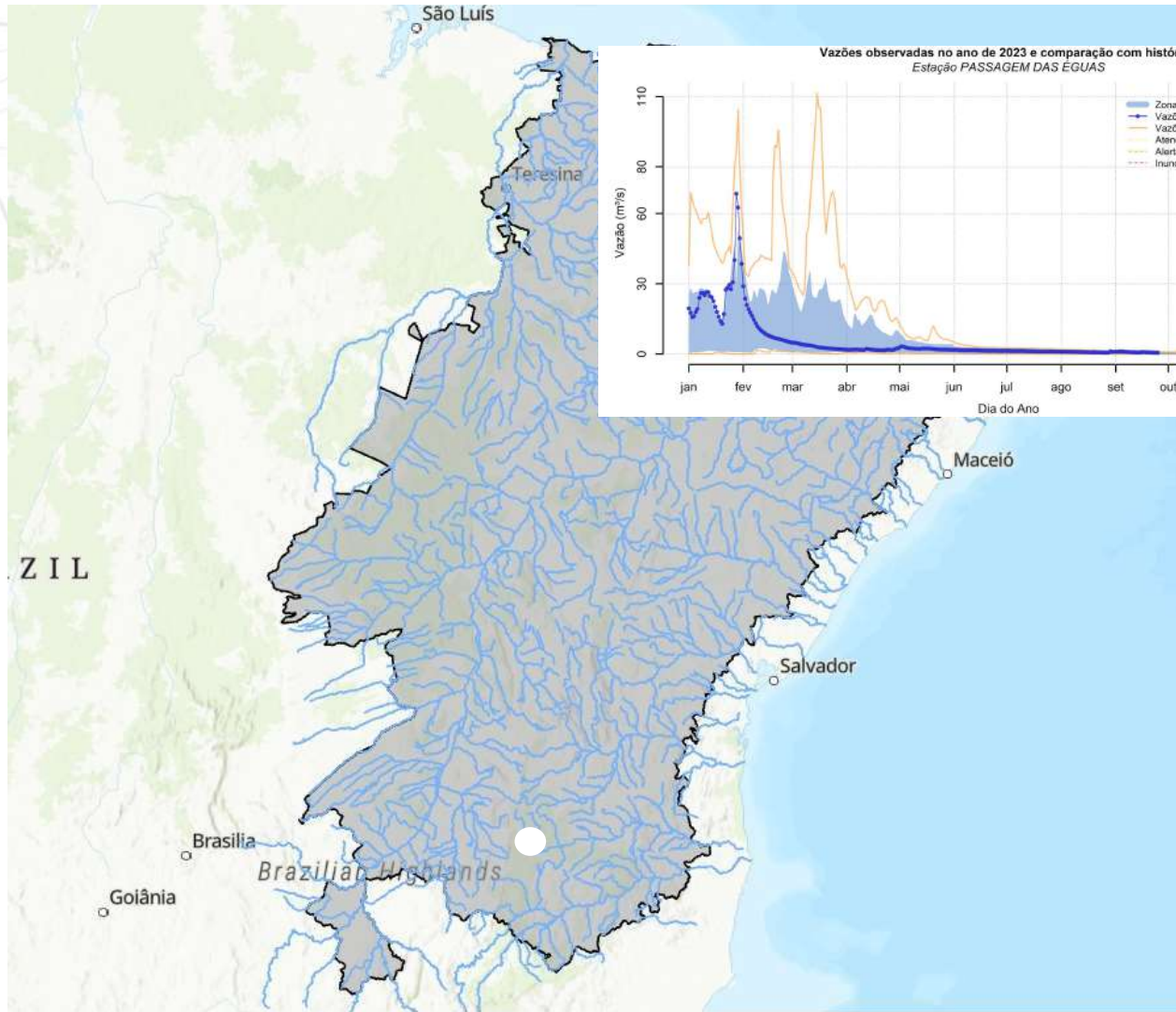
Níveis dos rios



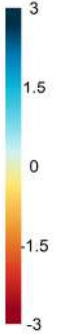
Níveis dos rios



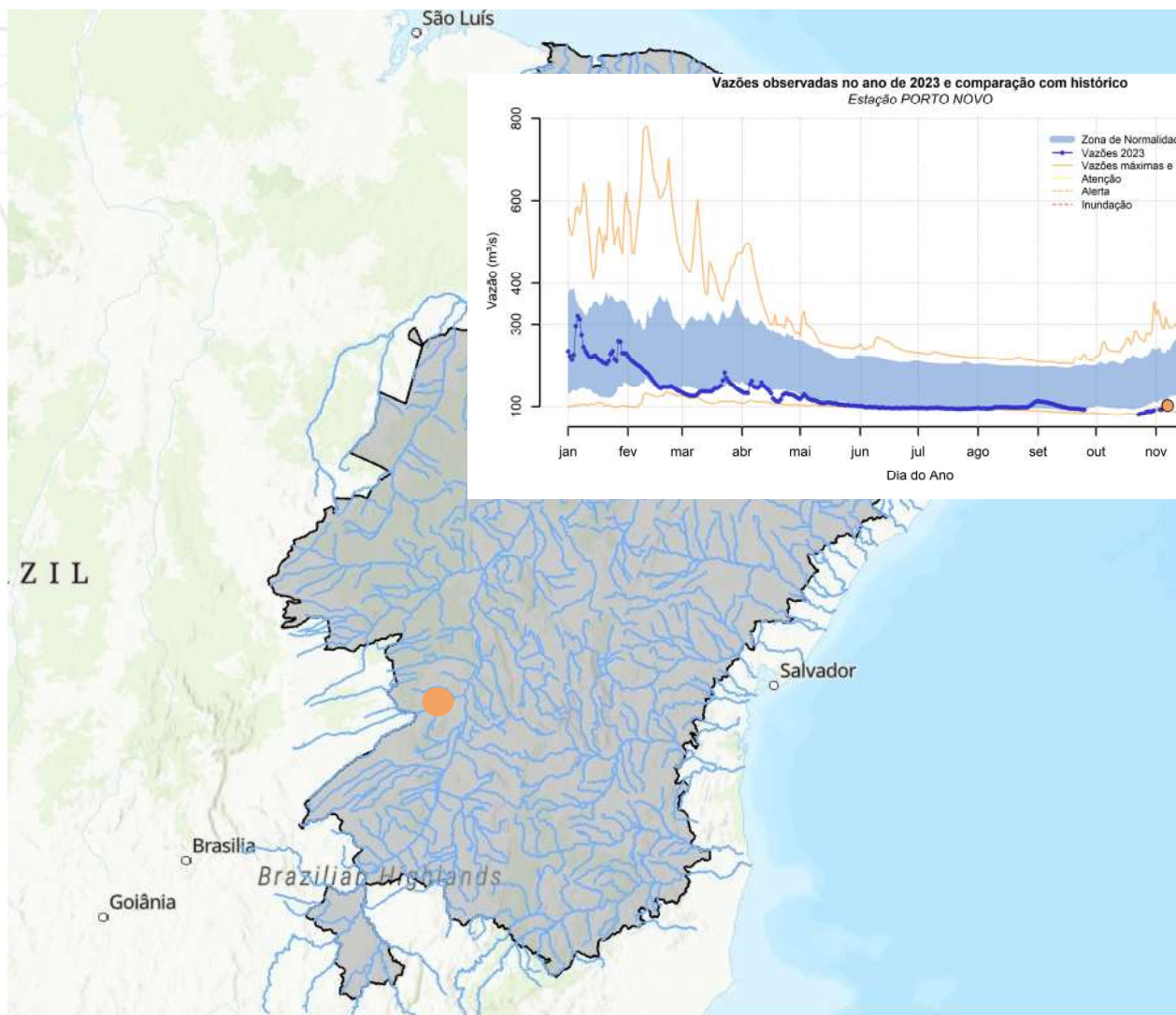
Níveis dos rios



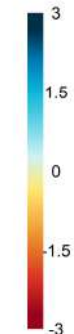
SSI



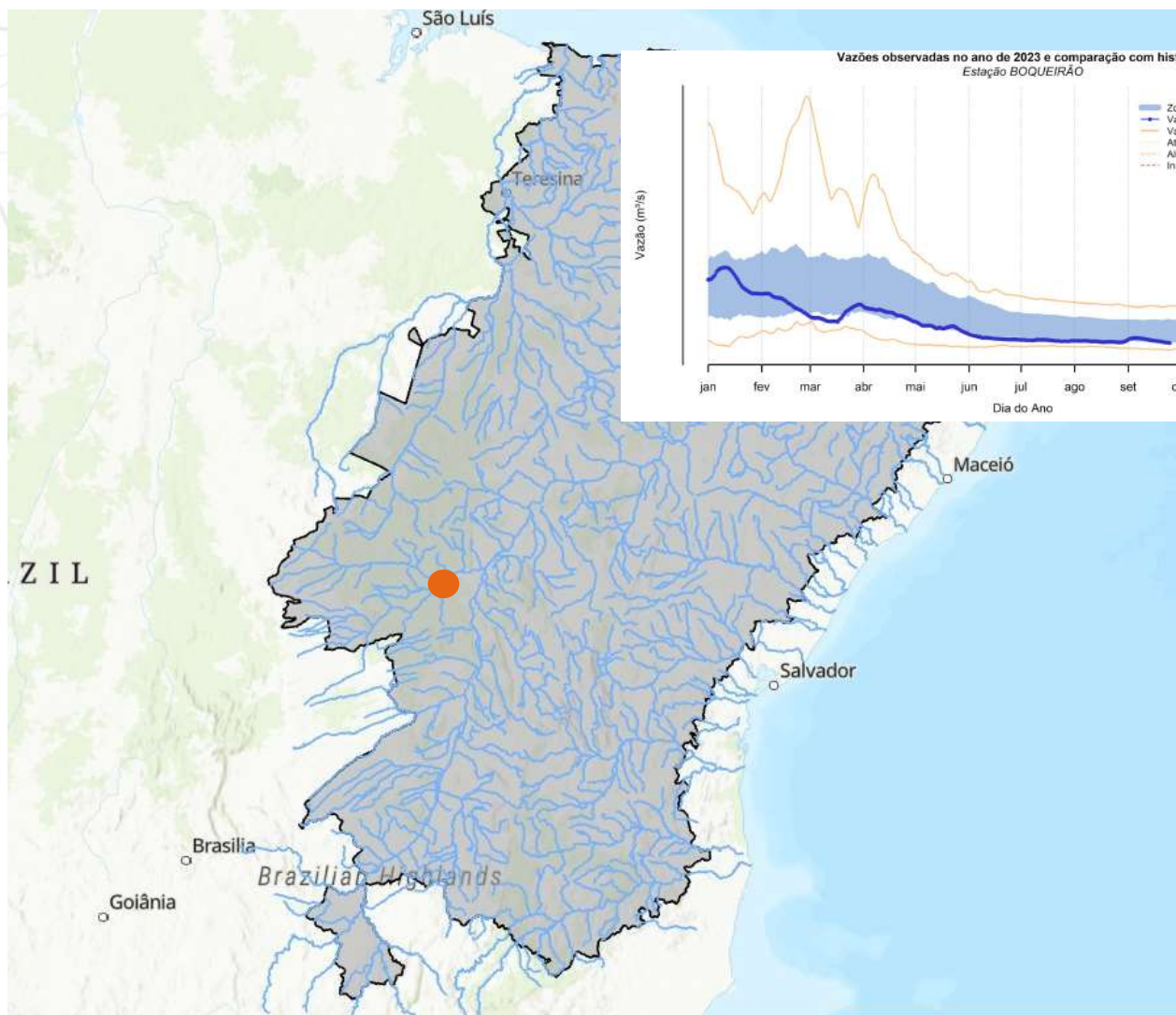
Níveis dos rios



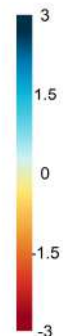
SSI



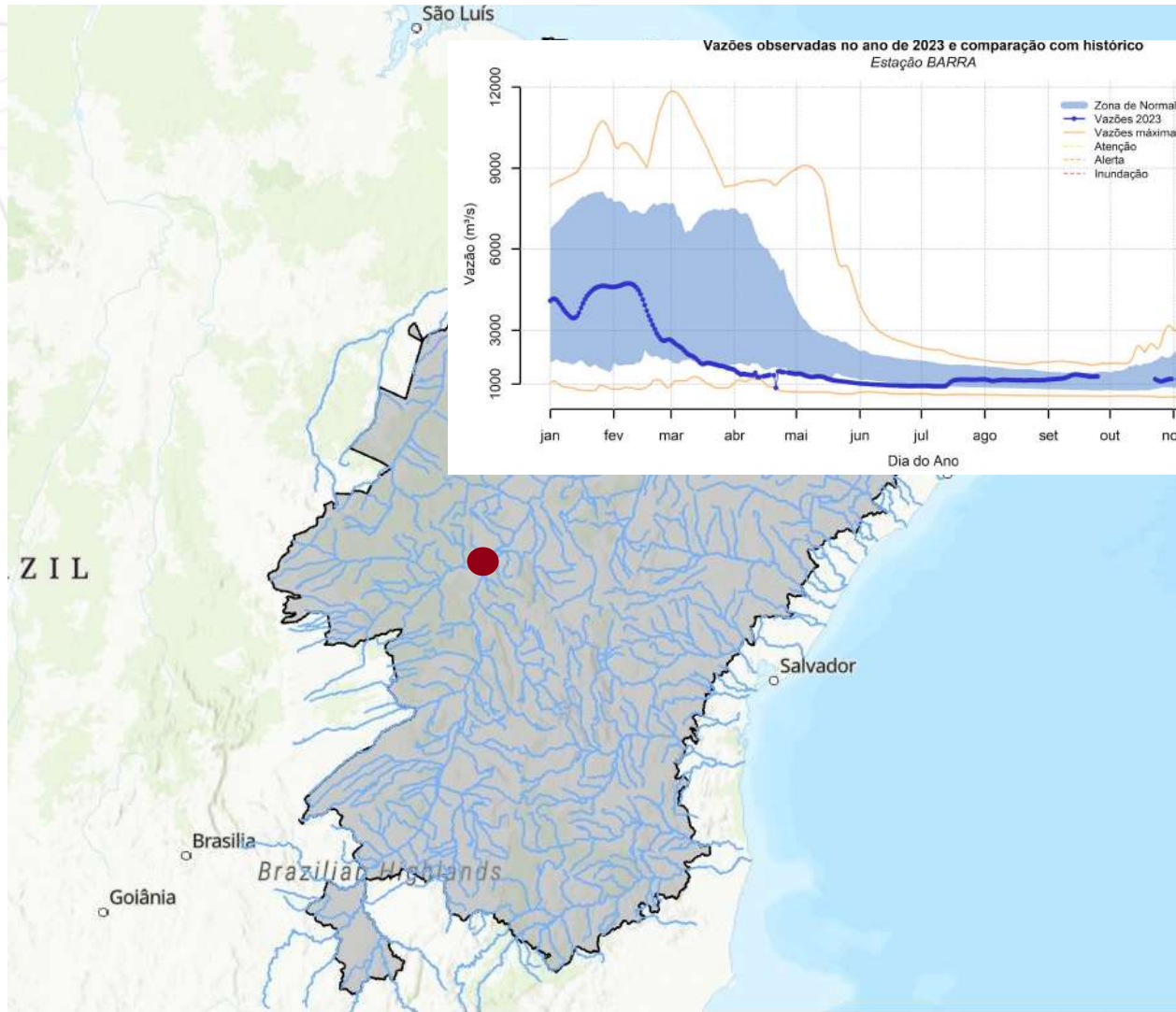
Níveis dos rios



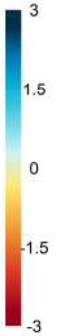
SSI



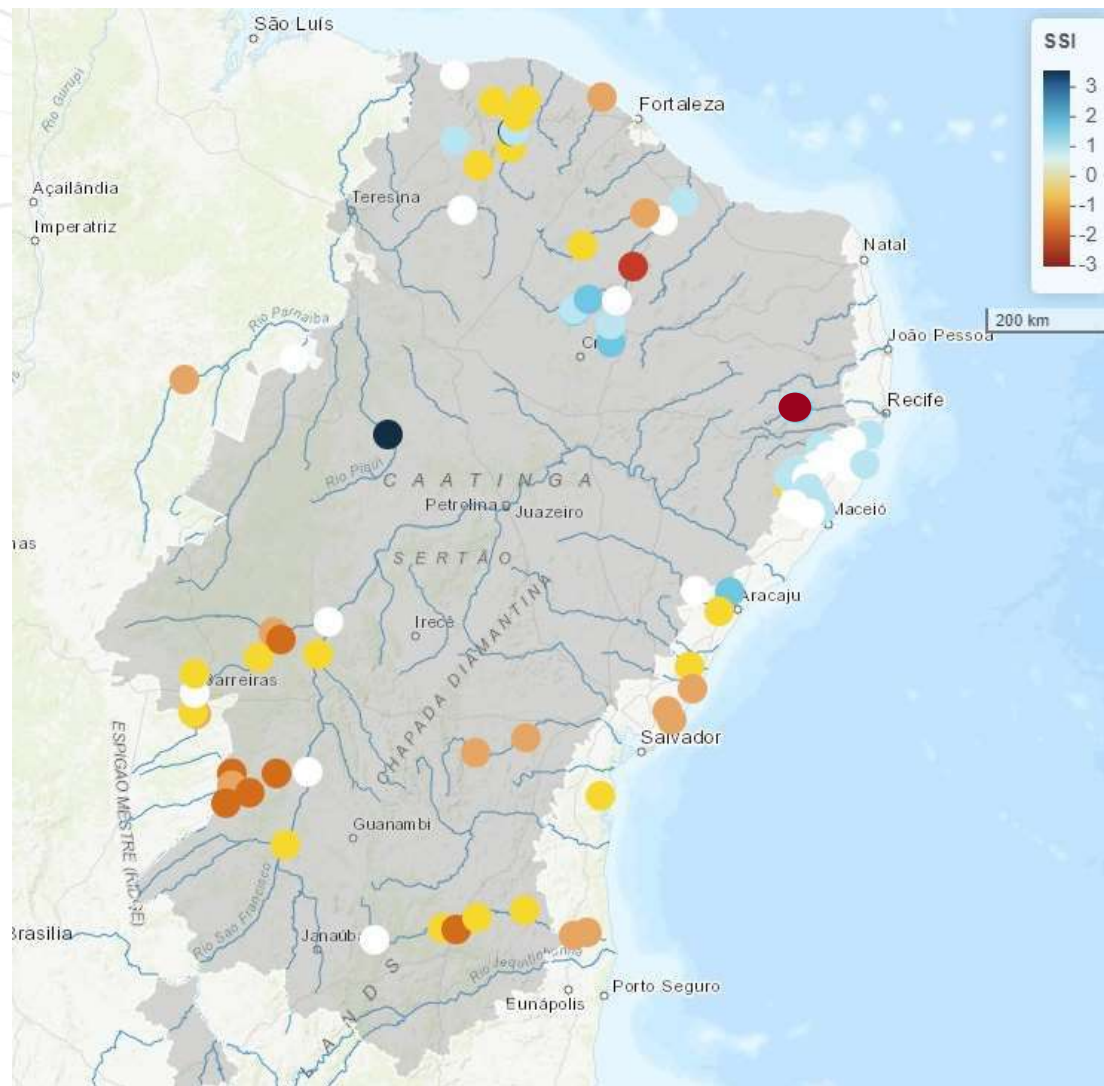
Níveis dos rios



SSI



Níveis dos rios



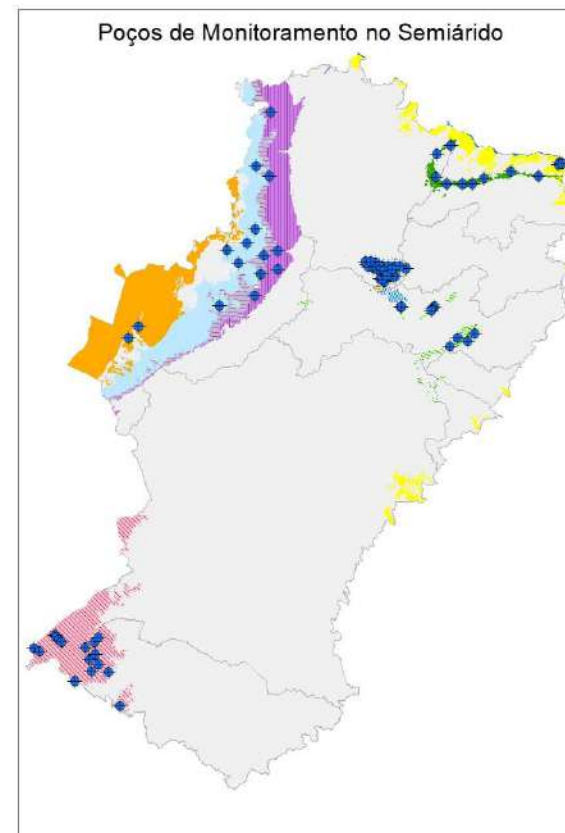
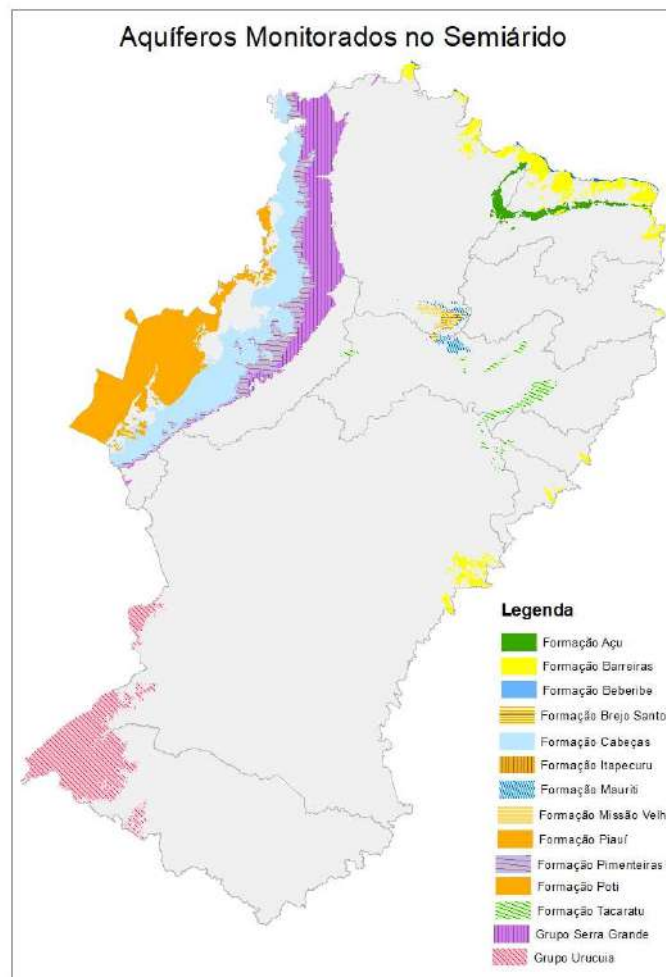
Níveis dos aquíferos



Rede Integrada de Monitoramento
das Águas Subterrâneas

79 pontos de
monitoramento das águas
subterrâneas no
semiárido.

- CE: 30 poços
- PE, RN, AL, PB: 31 poços
- BA, SE: 72 poços
- PI, MA: 24 poços



<https://rimasweb.sgb.gov.br/>

Níveis dos aquíferos



Rede Integrada de Monitoramento
das Águas Subterrâneas

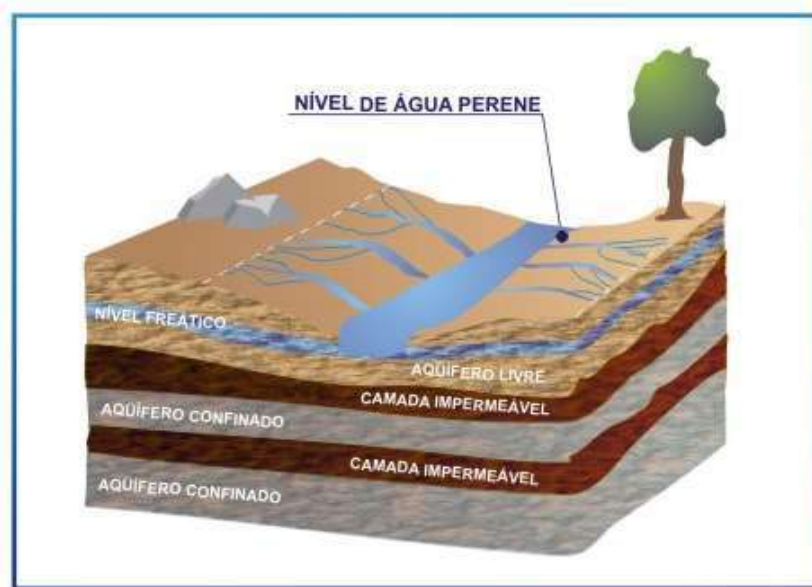


FIGURA 2.3

FONTE: BOSCARDIN BORGHETTI et al. (2004), adaptado de IGM (2001)

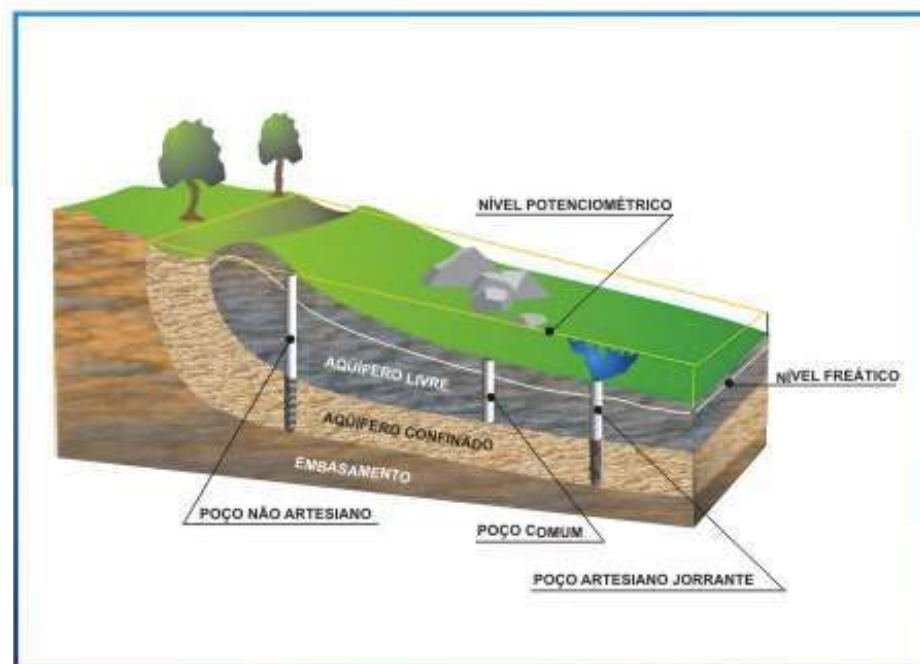
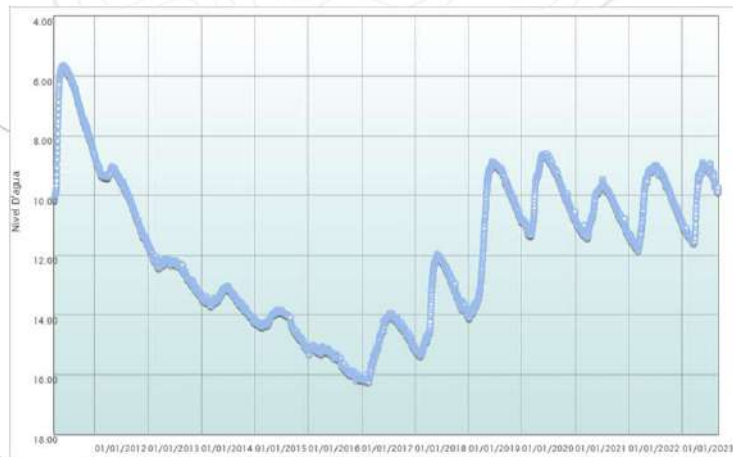
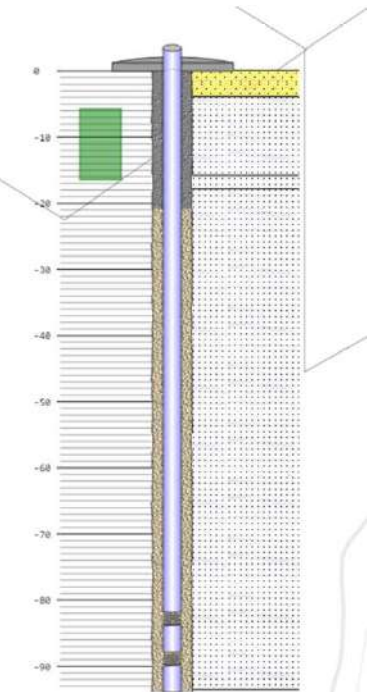
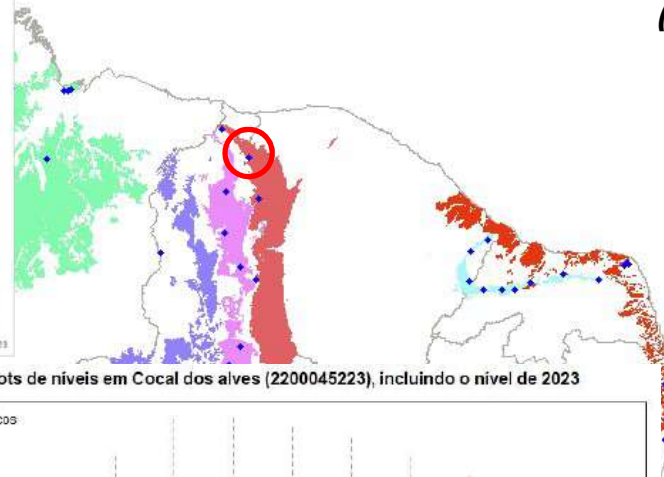


FIGURA 2.4

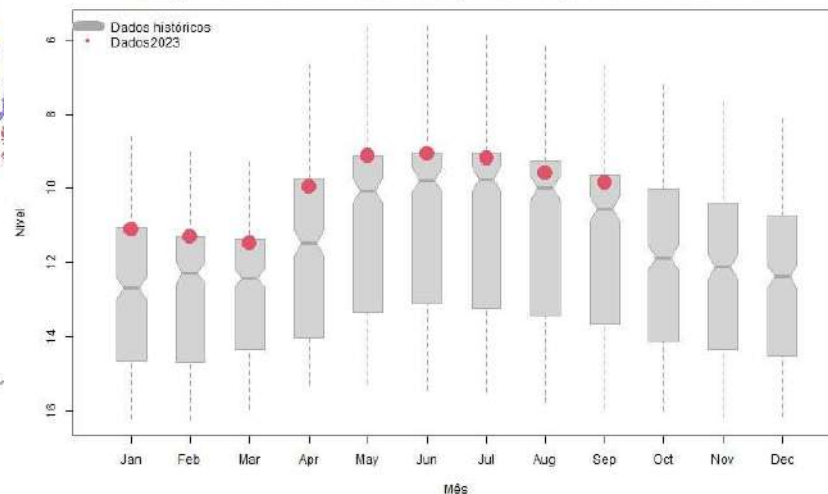
FONTE: BOSCARDIN BORGHETTI et al. (2004)

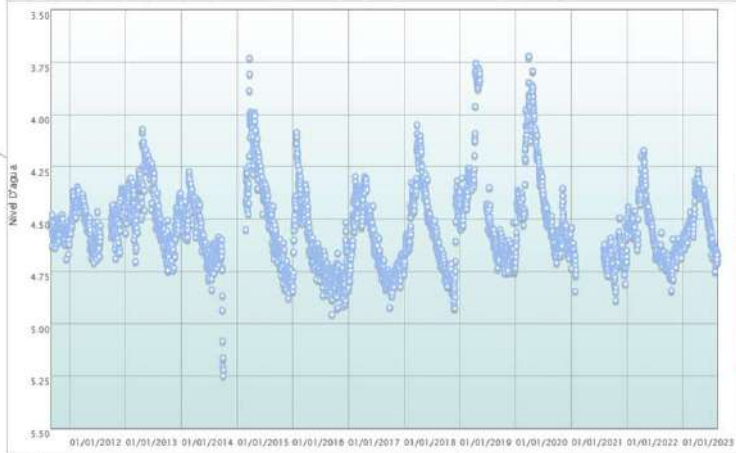


Cocal dos Alves-PI (livre)

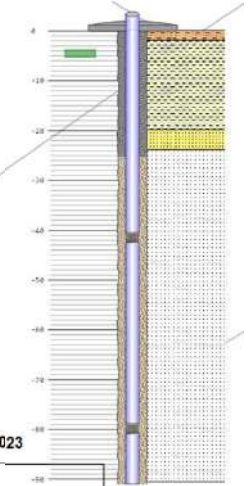


Box plots de níveis em Cocal dos alves (2200045223), incluindo o nível de 2023

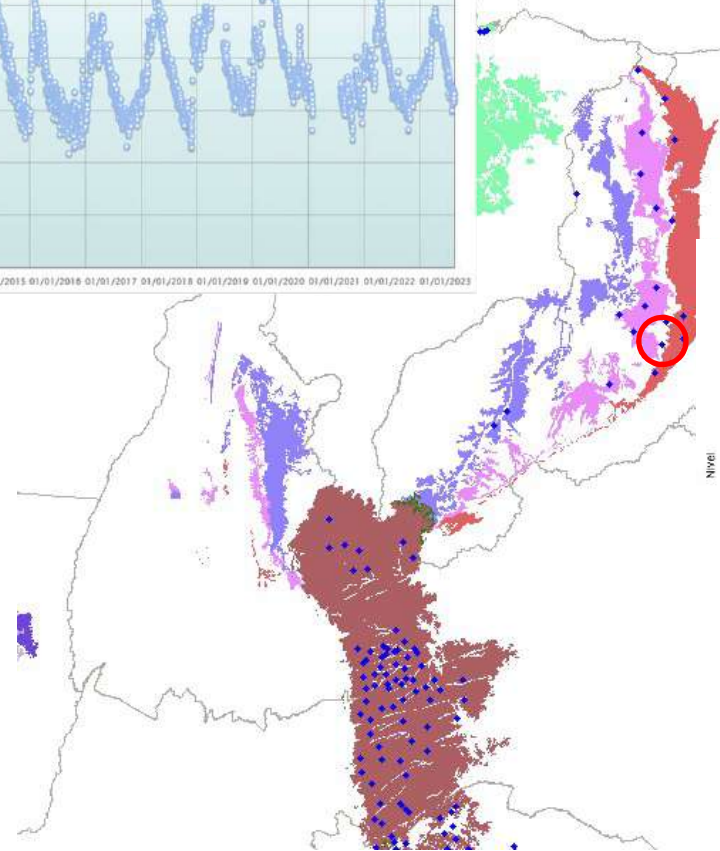
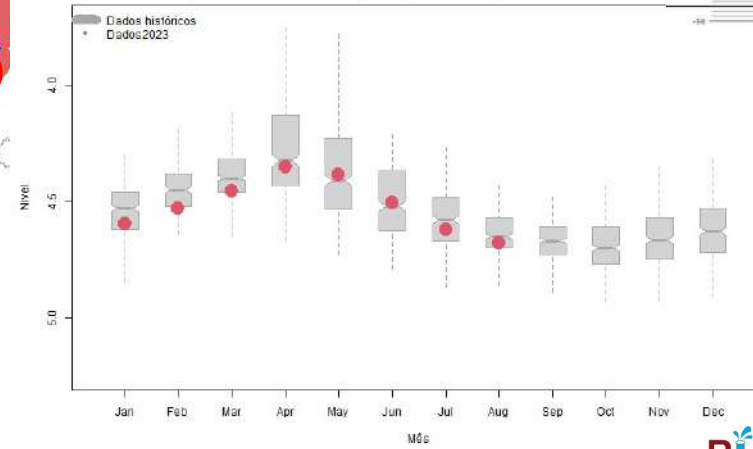




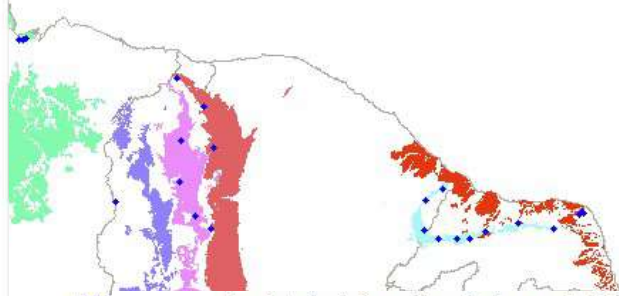
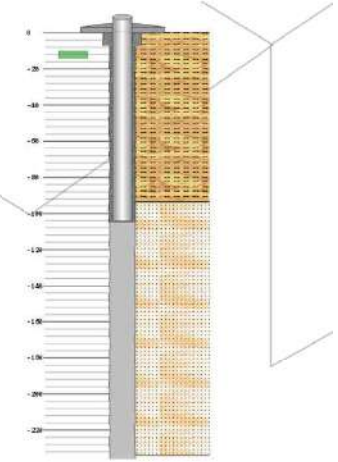
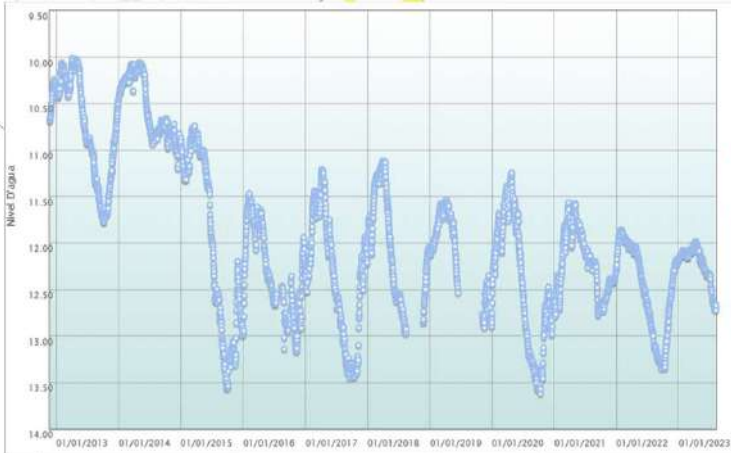
Itainópolis-PI (livre)



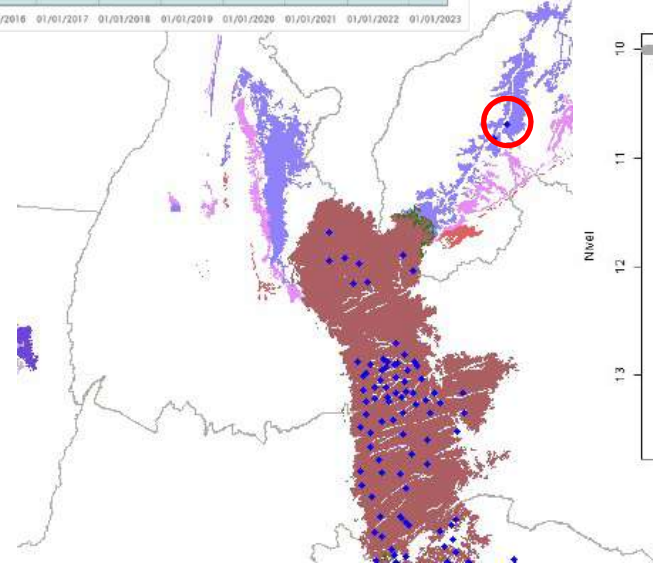
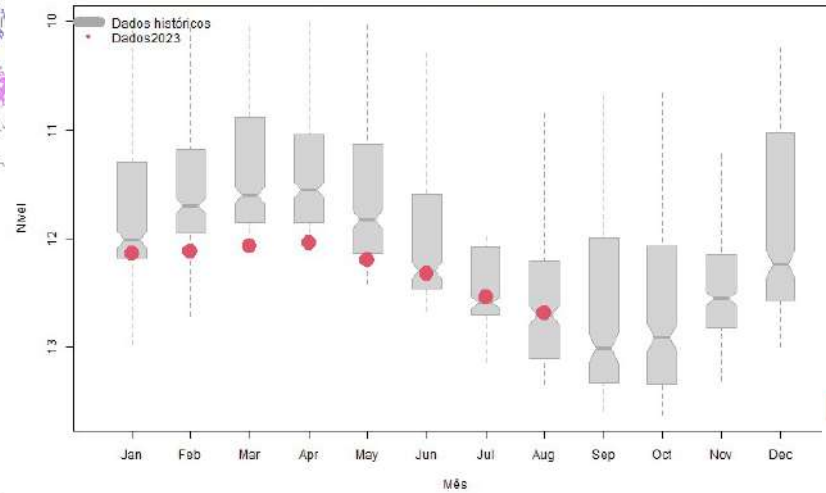
Box plots de níveis em Itainópolis (2200045222), incluindo o nível de 2023



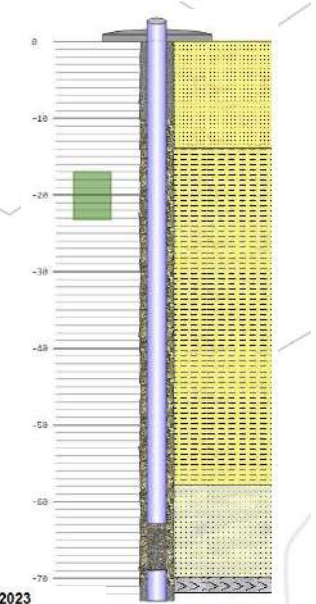
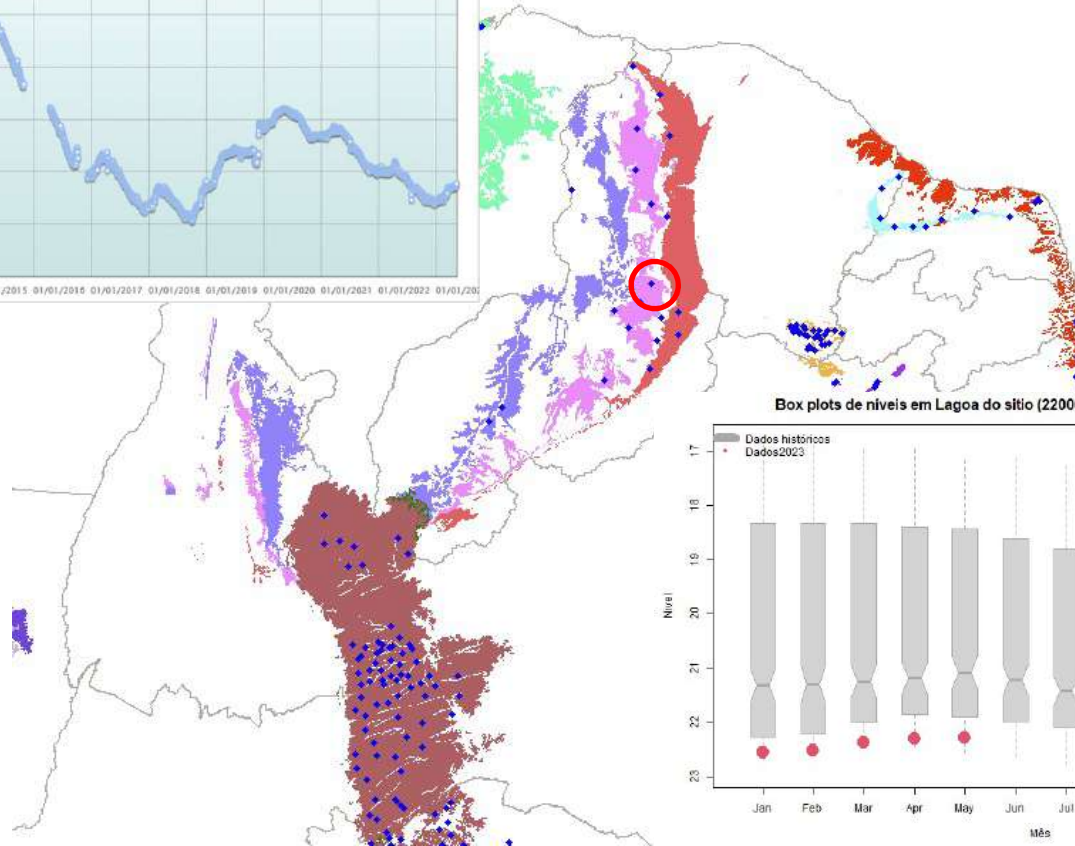
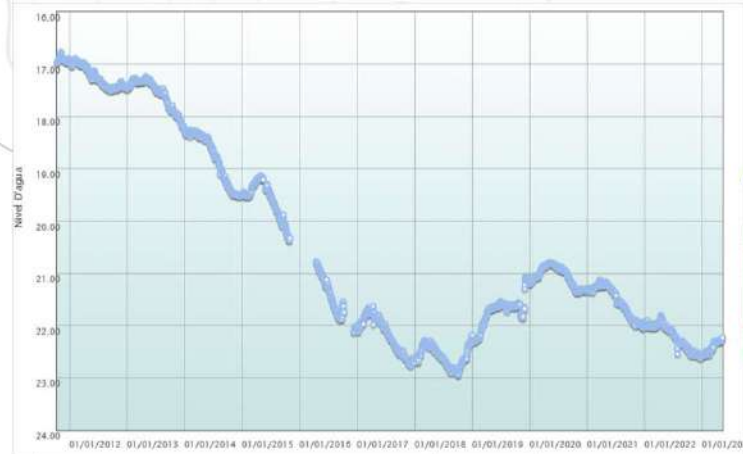
Vale da Gurguéia-PI (confinado)



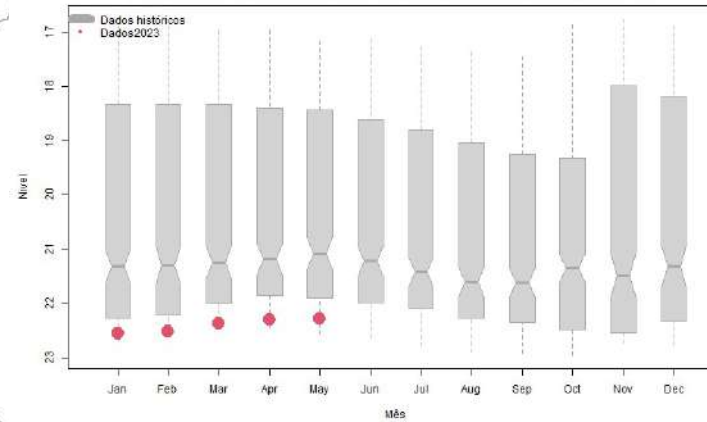
Box plots de níveis em Alvorada do gurgueia (2200017099), incluindo o nível de 2023



Lagoa do Sítio-PI (livre)

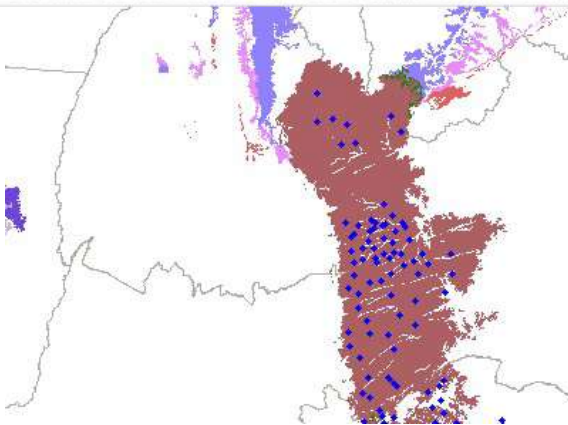
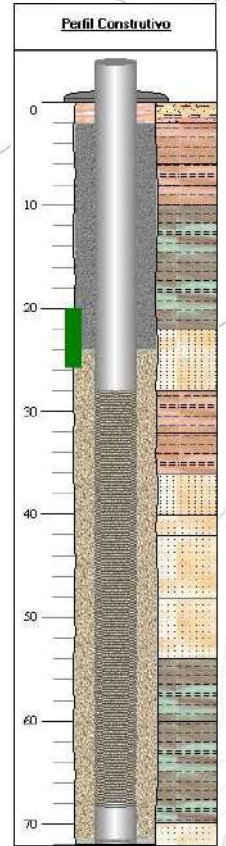
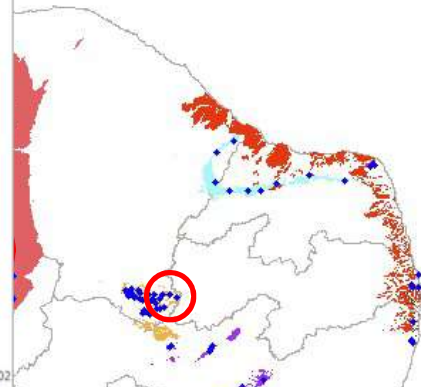


Box plots de níveis em Lagoa do sítio (2200046786), incluindo o nível de 2023

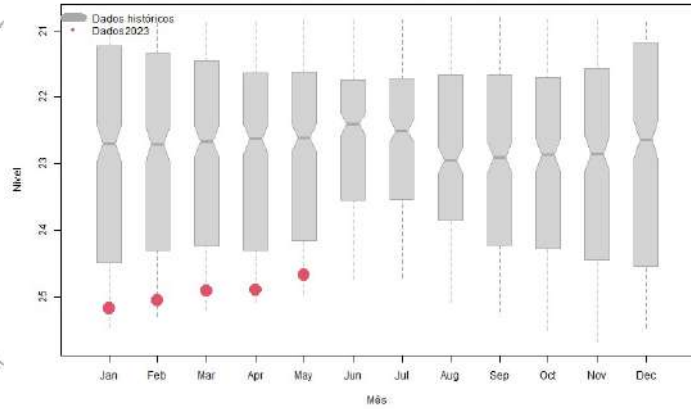




Abaiara-CE
(livre)

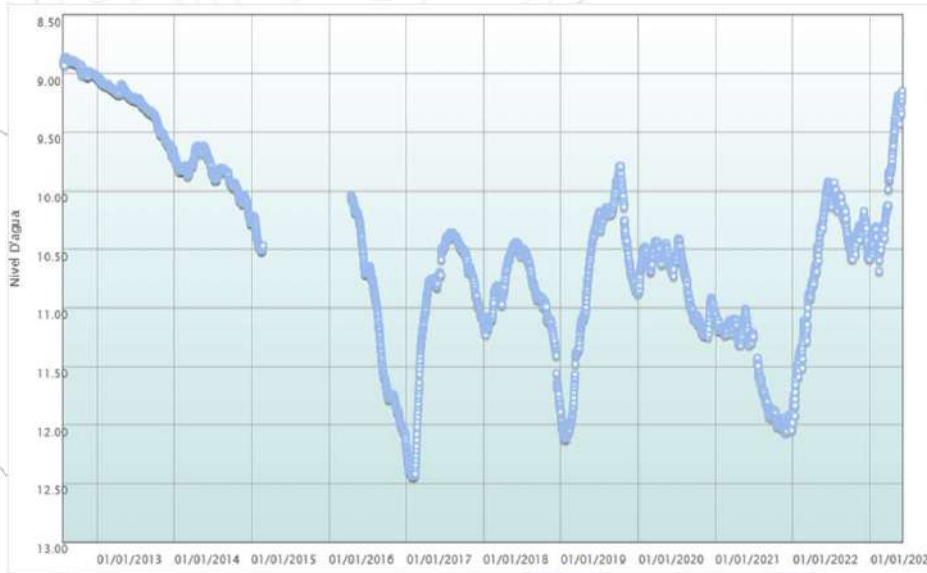


Box plots de níveis em Abaiara (2300022895), incluindo o nível de 2023

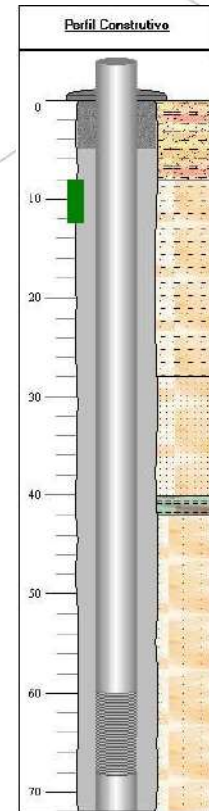
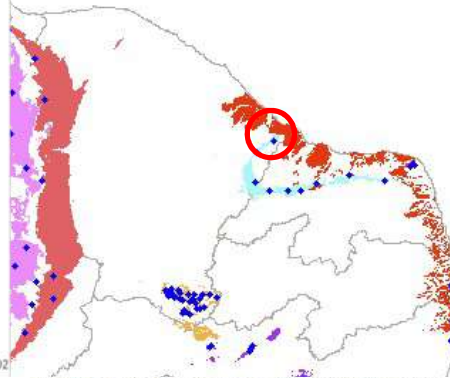


RIMAS
Rede Integrada de Monitoramento
das Águas Subterrâneas

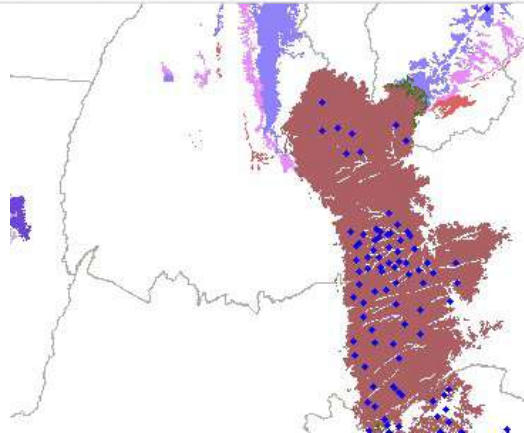
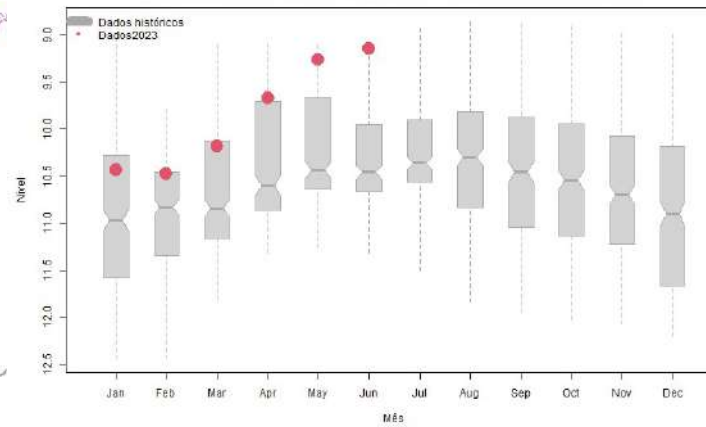
SGEO
SERVIÇO GEOLÓGICO
DO BRASIL - CPRM



Jaguaruana-CE (semi-confinado)



Box plots de níveis em Jaguaruana (2300022949), incluindo o nível de 2023





OBRIGADO



MINISTÉRIO DE
MINAS E ENERGIA

